



CENSUS OF PUNJAB
GOVERNMENT AND SEMI-GOVERNMENT
EMPLOYEES
AS ON
31-3-2019

ISSUED BY:-
ECONOMIC ADVISER, TO GOVERNMENT PUNJAB
CHANDIGARH

PREFACE



The data relating to number of Government Employees in the state is being collected regularly on annual basis which includes the number of employees working in Government, Semi-Government and Aided Institutions as well as Boards, Corporations and Local Bodies, etc.

In the present report, the data in respect of Government employees is being given under different categories such as group A, B, C & D, work charged, contingency paid and on contract basis, department-wise and district-wise, according to pay scales as well as male/female. The Number of Government, Semi-Government and Aided Institutions employees belonging to scheduled castes, backward classes, ex-servicemen, wards of freedom fighters, handicapped and employed on compassionate ground in position as on 31.3.2019 are also being given separately.

As on 31.3.2019, the employees for Government sector, Semi-Government and Aided Institutions are 310382, 80301 & 5659 respectively. Out of total 396342 employees, 117021 (29.53%) are female employees.

I acknowledge the co-operation provided by all Heads of Departments, Boards, Corporations, Local Bodies and Deputy Economic and Statistical Advisers, in the districts for furnishing the desired information. This report has been prepared under the guidance and supervision of Smt. Meena Rani, Deputy Economic & Statistical Adviser and under over all guidance and supervision of Smt. Kuldeep Kaur, Joint Director.

As there is always scope for improvement, I would sincerely welcome suggestions for improvement.

Place: Chandigarh
Dated:

Mohan Lal Sharma
Economic Adviser

CONTENTS

EXECUTIVE SUMMARY

I-V

PART - A

Government Employees		Page No
Table 1	Group-wise distribution of Government Employees as on 31st March, 2019	1
Box 1	Year wise No. of Government Employees.	2
Box 2	Employees in Government, Semi-Government and Aided Institutions in Punjab.	3
Table 2	Pay-scale and Group-wise Employees working at State Headquarter and at District level As on 31 st , March 2019.	4-5
Table 3	District wise /Group wise distribution of Government Employees.	6
Table 4	District wise/Department wise distribution of Punjab Government Employees as on 31 st , March 2019.	7-8
Box 3	Punjab Government Employees.	9
Table 5	Department-wise, Group-wise, and Sex-wise Distribution of Punjab Government Employees as on 31 st , March 2019.	10-11
Box 4(A)	Distribution of Government Employees in Districts and State Headquarter Chandigarh.	12
Box 4(B)	Distribution of Government Employees in Districts and State Headquarter.	13
Table 6	District-wise, Group-wise and Sex-wise Distribution of Punjab Government Employees as on 31 st , March 2019.	14
Box 5(A)	Reservation position in Punjab Government.	15
Box 5(B)	Reservation position in Punjab Government Departments.	16
Table 7	Department-wise, Group-wise distribution of Scheduled Castes, Backward Classes, Ex-Servicemen, Ward of Freedom fighters, Handicapped, and Compassionate Ground Employees as on 31 st March 2019.	17-22
Table 8	Distribution of SC's, BC's, Ex-servicemen, Wards of freedom Fighters, Handicapped and Compassionate ground Employees out of total posts filled in Punjab Government services as on 31 st March 2019.	23
Table 9	District-wise Number of Punjab Government Employees-Appointed, Retired, Pensioners during the year 2018-19 and likely to retire during 2019-20	24
Box 6	Department-wise distribution of Government Employees	25
Table 10	Department-wise Number of Punjab Government Employees-Appointed, Retired during the year 2018-19 and Pensioners Likely to retire during 2019-20.	26-27
Box 7	Estimated Expenditure on salaries of Government Employees According to Pay-scales during the year 2018-19.	28
Table 11	Estimated Expenditure on Salaries of Government Employees According to Pay-Scales during the year 2018-19	29-30

PART – B

Semi-Government Employees

Box 8	Distribution of Semi-Government Employees.	31
Table 1	Pay-scale wise No. of Semi-government Employees working in Boards , Corporations, Municipal,Corporations/Committees, Improvement Trusts, Zila Parishads, Market Committees and Panchayat Samities as on 31 st March 2019.	32-33
Box 9	Reservation position in Semi- Government Employees.	34
Table 2	Number of reserved category employees employed on Compassionate grounds working in Boards /Corporations, Municipal Corporations/Committees, Improvement Trusts/ Zila Parishads, Market Committees and Panchayat Samities.	35
Table 3	District wise No. of Semi-Government Employees working in Municipal Corporations/Committees as on 31 st March, 2019.	36
Table 4	District wise No. of Employees working in Improvement trusts. as on 31st March, 2019.	37
Table 5	District wise No. of Employees working in Zila Parishads. as on 31st March, 2019.	38
Table 6	District wise No. of Employees working in Market Committees as on 31st March, 2019.	39
Table 7	District wise No. of Employees working in Panchayat Samities as on 31st March, 2019.	40
Table 8	District wise No. of Semi-Government Employees working in Boards/Corporations as on 31 st March, 2019.	41

PART - C

Employees in Aided Institutions

Table 1	Pay Scale-wise Number of employees working in Aided Institutions as on 31st March, 2019.	42
Box 10	Distribution of Employees in Aided Institutions as on 31st March, 2019.	43
Table 2	District-wise Number of employees working in Aided Institutions as on 31st March, 2019.	44

STRENGTH SUMMARY

The report on Census of Punjab Government and Semi-Government employees is prepared on an annual basis. The present report covers all the State Government employees (permanent, temporary, contingency paid, work-charged or on contract basis) as on 31st March, 2019.

Distribution of Government Employees

1. Total Number of Government employees decreased from 313325 as on 31st March 2018 to 310382 as on 31st March, 2019.

Group-wise Distribution of Government Employees

2. The group wise total number of employees in the state government as on 31st March 2018 is shown in the table:

Category	Group-A	Group-B	Group-C	Group-D	Others	Total
Male	17270	32936	107696	32746	18470	209118
Female	13658	23394	40869	8659	14984	101264
Total	30928	56330	148565	41105	33454	310382

3. The number of Group- A officers has decreased from 31737 as on 31st March 2018 to 30928 as on 31st March 2019 but it increased from the level of 29326 on 31.3.2016 due to change in classification of employees consequent upon issue of department of Personnel's letter which restored the previous classification into groups as per Punjab Civil Services (revised pay scales) rules, 2009.
4. District wise highest percentage of (12.11%) Group- A officers were posted in Gurdaspur and the lowest i.e. (0.49%) were posted at district Pathankot.
5. Highest percentage (62.92%) of Group- A officers were employed with Education Department followed by Health (12.89%) & Agriculture (2.23%).
6. The total number of Group B employees in the state has shown a marked increase from 52595 as on 31st March 2018 to 56330 as on 31st March 2019 shows increase of i.e. 5.51%.
7. District wise highest number of Group B officers were posted at Amritsar (7454) and the lowest number (602) at Barnala.
8. Highest percentage (56.44%) of Group B employees posted in Education Department.
9. The number of Group C employees has come up from 153573 to 148565 1st March 2018 to 31st March 2019.
10. District wise highest percentage of Group C employees i.e. (14.60%) were posted at Ludhiana whereas the lowest (1.39%) were posted at Barnala.

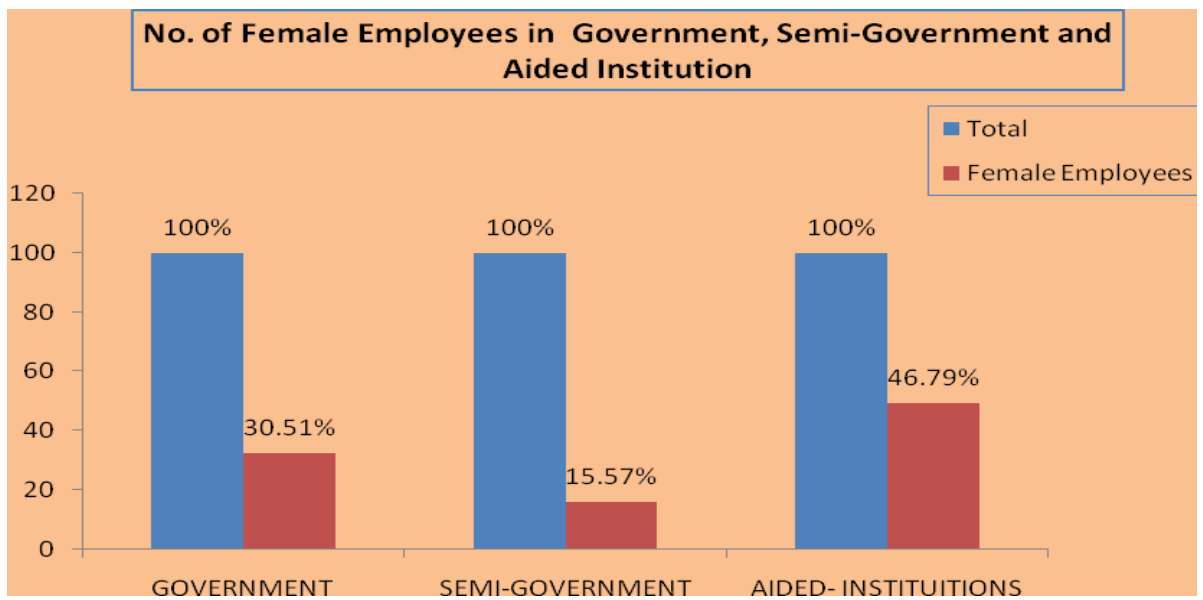
11. Education Department Department employed highest percentage (36.19%) of the total Group C employees followed by the Police (22.61%).
12. The number of Group D employees recorded a decline from 43248 as on 31st March 2018 to 41105 as on 31st March 2019, showing a decrease of 4.95%.
13. 96.22% of total Group A employees are working in Districts whereas 3.78% were posted at Chandigarh as on 31st March 2019.
14. 94.62% of total Group B employees are working in Districts whereas 5.38% were posted at Chandigarh as on 31st March 2019.
15. 97.33% of total Group C employees are working in Districts whereas 2.67% were posted at Chandigarh as on 31st March 2019.
16. 94.94% of total Group D employees are working in Districts whereas 5.06% were posted at Chandigarh as on 31st March 2019.
17. Highest percentage of Group D employees 11.12% were posted at Ludhiana whereas the lowest 1.28% were working at Barnala.
18. Highest number of Group D employees posted at education department 19.54% followed by irrigation 15.78% and health 13.21%.
19. Contingency paid, work charged and Contract basis employees has increased from 32172 (on 31st March 2018) to 33454 (on 31st March 2019).
20. Out of 33454 contingency paid, work charged, contract basis and any other category of employees, 2.23% were working at Chandigarh and the remaining 97.27% were working in districts.

Category	State Headquarter (Chandigarh)	District	Total
Group-A	1169	29759	30928
Group-B	3032	53298	56330
Group-C	3964	144676	148640
Group-D	2083	39117	41200
Others	746	32538	33284
Total	10994	299388	310382

21. Highest number of 4001 contingency paid, work charged, contract basis and any other category of employees were employed in Ludhiana District and the lowest 68 in Amritsar.
22. Highest percentage 32.20% of contingency paid, work charged, contract basis and any other category of employees are working at education department followed by Social Welfare & Welfare SCs & BCs of 18.85%.

Participation of Women in Government Employment

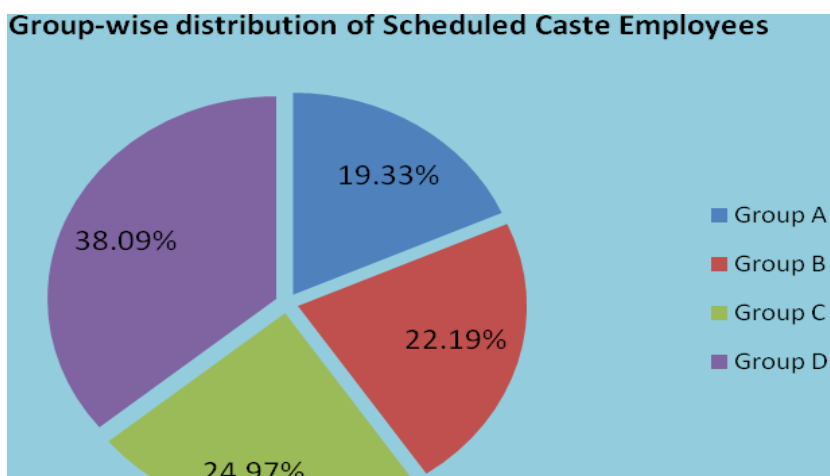
23. Out of total 310382 government employees, less than half i.e. 101264 (32.63%) were female employees.
24. Out of the total 30298 Group A officers 13658 are female officers which accounts for 45.08% whereas out of 56330 group B officers 23394 are female officers which accounts for 41.53%.
25. Highest percentage of Group A & B female employees were employed with Education Department (34.20%, 30.59%) followed by Health Department (5.07%, 3.82%).
26. In group C & D, female accounts for 27.51% and 20.91% respectively.
27. Out of the total 33454 contingency paid employees, 44.79% were females.



Reservation Position in Government Employment

Category	Group-A	Group-B	Group-C	Group-D	Total
Scheduled Castes	6018	13237	39059	16178	74492
Backward Classes	2847	6440	18681	5690	33658
Others	1292	2447	7912	3755	15406
Total	10157	22124	65652	25623	123556

28. Out of the total 276928 filled up posts of government employees 74492 (26.90%) belonged to scheduled castes. Group-wise Scheduled castes employees numbered 6018 (19.46%) in group-A, 13237 (23.50%) in group-B, 39059 (26.29%) in group-C and 16178 (39.36%) in group-D. (Percentage derived from the total filled posts of the same group).



- 29.** As on 31.3.2019 out of the total 276928 filled up posts of government employees, 33658 (12.15%) belonged to backward classes. Group-wise Number of these employees were 2847 (9.20%) in group-A, 6440 (11.43%) in group-B, 18681 (12.57%) in group-C and 5690 (13.84%) in group-D. *(Percentage derived from the total filled posts of the same group).*
- 30.** Out of the total 276928 filled up posts of Government Employees, 4290 (1.55%) belonged to Ex-servicemen. The Group wise break up of Ex-Servicemen Government employees were 445 (1.44%) in Group A, 772 (1.37%) in Group B, 2450 (1.65%) in Group C and 623 (1.52%) in Group D. *(Percentage derived from the total filled posts of the same group).*
- 31.** As on 31.3.2019 out of the total 276928 filled up posts of Government Employees, 1670 (0.60%) belonged to Freedom Fighter category. Group wise distribution of such employees were 213 (0.69%) in Group A, 359 (0.64%) in Group B, 805 (0.54%) in Group C, and 293 (0.71%) in Group D. *(Percentage derived from the total filled posts of the same group).*
- 32.** As on 31.3.2019 out of the total 276928 filled up posts of Government Employees, 3230 (1.17%) were handicapped. Group wise break up of handicapped employees is 269 (0.87%) in Group A, 711 (1.26%) in Group B, 1530 (1.03%) in Group C, and 720 (1.75%) in Group D. *(Percentage derived from the total filled posts of the same group).*
- 33.** Out of the total 276928 filled up posts of Government employees, 6216 (2.24%) employees belonged to compassionate ground category. Out of these 365 employees (1.18%) were in Group A, 605 (1.07%) in Group B, 3127 (2.10%) in Group C, and 2119 (5.16%) in Group D. *(Percentage derived from the total filled posts of the same group).*

Retirement Position of Government Employees.

34. During the year 2018-19, 4168 government employees were appointed and 4988 employees were retired from services after superannuation.

Expenditure on Government Employees

35. During the year 2018-19 the estimated annual expenditure on the salaries of Government employees were Rs. 15472.62 crores i.e. 4.98 lakhs per employee.

Distribution of Semi-Government Employees.

Category	Board / Corporations	Municipal Corporation/ Committees	Nagar Council	Nagar Panchayat	Education Board	Improvement Trusts	Zila Parishads	Market Committees	Panchayat Samities	Total
Male	45665	11956	3537	518	960	480	343	1941	1928	67328
Female	6533	3360	1296	118	756	87	136	337	338	12973
Total	52198	15316	4833	636	1716	567	479	2290	2266	80301

36. There were 80301 semi- government employees in the state. Highest 65.00% were employed in Boards and Corporations followed by 19.07% in Municipal corporations / committees, 6.02% Nagar Council, 2.85% Market committees, 2.82% Panchayat samities, 2.14% Education Board, 0.82% Nagar Panchayat, 0.79% Zila Parishads and 0.71% Improvement trusts.
37. Out of the total 148734 sanctioned posts in Boards, Corporations / Local bodies 8031 (53.99%) posts were filled up.
38. In Boards/ Corporations, 12215 employees were working in the pay scale of 10300-34800+3200.
39. The highest number of employees 9023 of Municipal Committees/Corporations was working in the pay scale of 4900-10680+1650.
40. In improvement trust, highest numbers of employees 216 were working in the pay scale of the 4900-10680+1650.
41. In Zila Parishads the highest No. of employees 136 were working in the pay scale of 4900-10680+1650.
42. In Market Committees the highest No. of employees 504 were working in the pay scale of 10300-34800+3200.
43. In Panchayat Samitis the highest No. of employees 1563 were working in the pay scale of 10300-34800+3200.

Position of Women in Semi-Government Employment

44. Out of 80301 employees 12973 female employees were employed in the semi-Government offices. Out of this the highest no. of females 6533 were employed in Boards / Corporations followed by 3360 in Municipal Corporations / Committees, 1296 in Nagar Council, 756 in Education

Board, 349 in Market Committees, 338 in Panchayat Samitis, 136 in Zila Parishads, 118 Nagar Panchayat and 87 in Improvement Trusts.

Reservation position of Semi- Government Employees

45. Out of total 52198 employees of Boards / Corporations 22.91% belonged to Scheduled Castes, 11.63% Backward Classes, 0.45% Ex-Servicemen, and 0.05% Wards of Freedom Fighters.
46. Out of total 15316 employees of Municipal Corporations / Committees 62.54% belonged to Scheduled Castes, 6.39% Backward Classes, 0.27% Ex-Servicemen, and 0.50% Wards of Freedom Fighters.
47. Out of total 567 employees of Improvement Trusts 26.63% belonged to Scheduled Castes, 15.17% Backward Classes, 0.53% Ex-Servicemen.
48. Out of total 479 employees of Zila Parishads 31.73% belonged to Scheduled Castes, 11.06% Backward Classes, 3.55% Ex-Servicemen and 1.46% Wards of Freedom Fighters.
49. Out of total 2290 employees of Market Committees 26.90% belonged to Scheduled Castes, 9.04% Backward Classes, 1.14% Ex-Servicemen, and 0.66% Wards of Freedom Fighters.
50. Out of total 2266 employees of Panchayat Samities 19.51% belonged to Scheduled Castes, 10.99% Backward Classes, 0.97% Ex-Servicemen and 0.49% Wards of Freedom Fighters.

Retirement Position of Semi-Government Employees

51. Out of total 80301 filled up posts, 3218 employees retired from Board/Corporations followed by 382 in Municipal corporations/committees, 82 in Market Committee, 101 in Nagar Council, 21 in Panchayat samities, 17 Improvement trusts 17 in Nagar Panchayat and 11 in Zila Parishads .

Employees working in Aided Institutions of Punjab

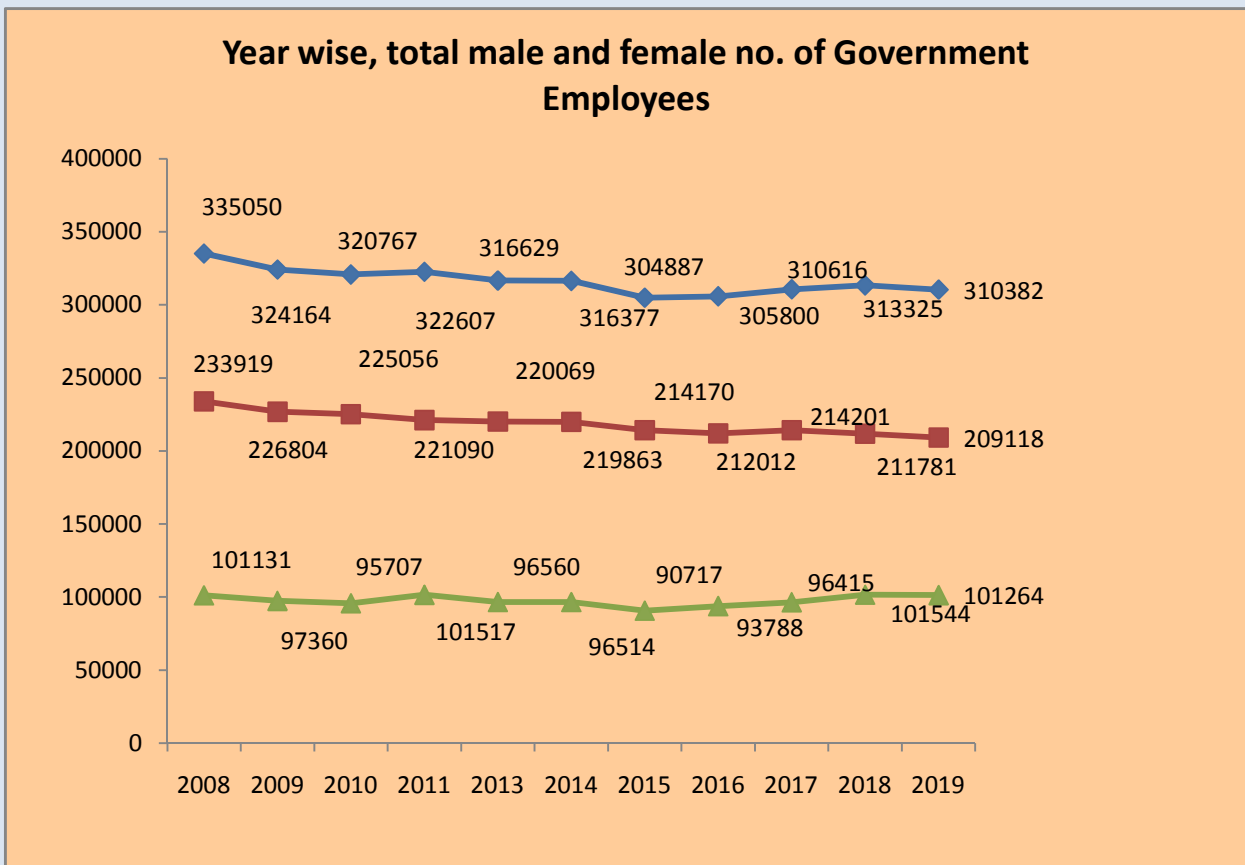
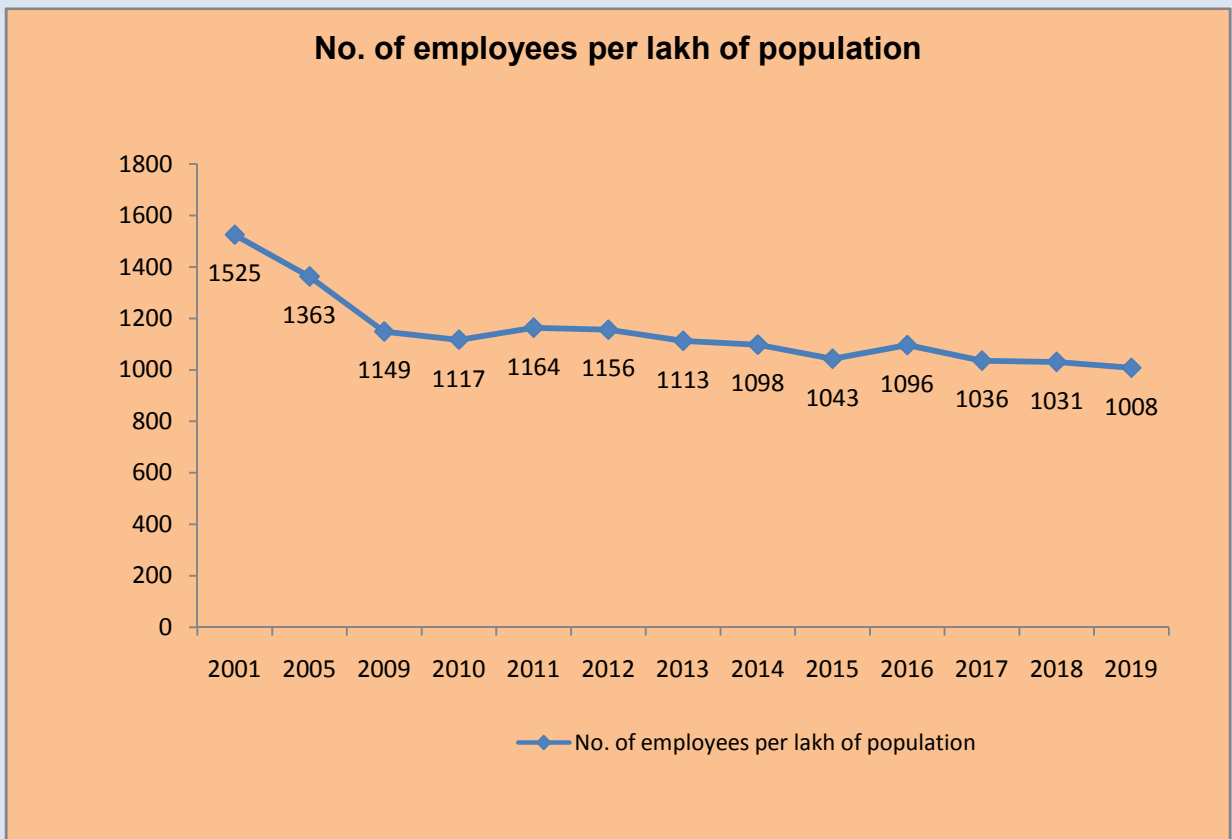
Category	Aided-Institutions
Male	2875
Female	2784
Total	5659

52. The total No. of employees in Aided Institutions was 5659. Out of this, 1016 (17.95%) employees belonged to Scheduled Castes, 534 (9.44%) to Backward Classes, 43 (0.76%) to Ex-servicemen, 19 (0.34%) to wards of Freedom Fighters, 82 (1.45%) to Handicapped and 62 (1.10%) were employed on Compassionate grounds. 196 employees of Aided Institutions retired during the year 2018-19.

Table 1:- Group-wise distribution of Government Employees as on 31st March, 2019.

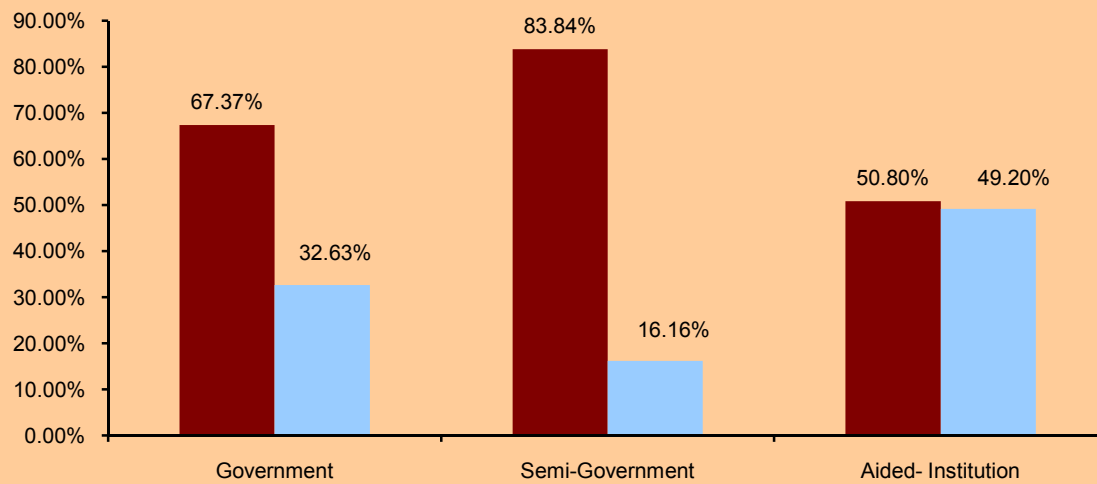
Year	Group A	Group B	Group C	Group D	Contingency paid, work charged and on contract basis	Total
1	2	3	4	5	6	7
2000	10275	4906	256105	65984	38178	375448
2001	11505	10892	247083	66939	35048	371467
2002	12534	12095	247940	68097	37711	378377
2003	13154	12078	246705	67673	34577	374187
2004	13189	12420	243161	67113	35898	371781
2005	12558	12471	236791	65437	30033	357290
2006	12248	12609	229620	63151	30162	347790
2007	11706	12650	221569	61931	37681	345537
2008	11296	12611	211161	61074	38908	335050
2009	10819	13161	204641	57508	38035	324164
2010	10768	20833	191432	56805	40923	320761
2011	10793	22156	188189	55531	45938	322607
2013	31108	46777	151776	50191	36777	316629
2014	32479	51039	145764	49691	37404	316377
2015	23323	55877	152392	47595	25700	304887
2016	29326	56920	144699	45703	29152	305800
2017	32931	55601	149262	44109	28713	310616
2018	31737	52595	153573	43248	32172	313325
2019	30928	56330	148565	41105	33454	310382

BOX -1: Year wise No. of Government Employees



BOX -2: Employees in Government / Semi- Government and Aided Institutions in Punjab.

Sex wise distribution of Employees- Government, Semi-Government and Aided institutions in Punjab



Employees in Government, Semi-Government and Aided Institutions in Punjab as on 31st march 2019

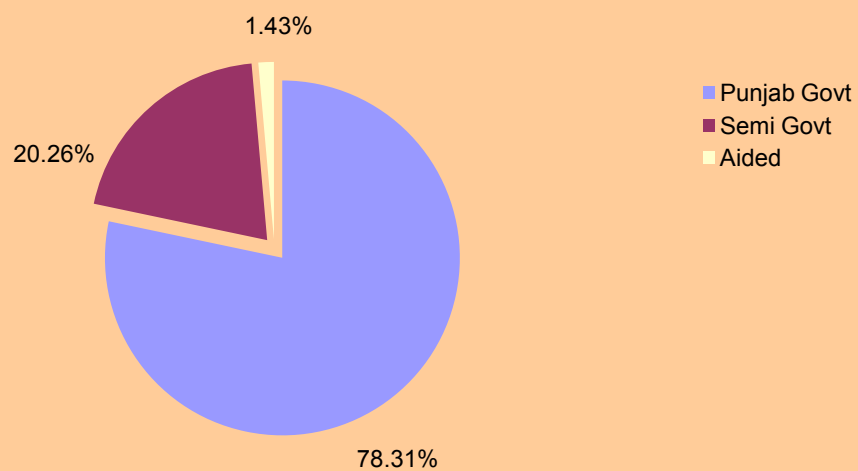


Table 02

Pay Scale and Group Wise Employees Working at State Headquarter and District Level as on 31st March : 2019

Sr.No	Pay Scale/GradePay	State Headquarter (Chandigarh)	District Level	Total	%age of Employees Working at Chandigarh	%age of Employees Working at District Level	% to Total Employees
Pay Scale Wise Distribution of Group A Employees							
2	10300-34800+5000	65	13432	13497	0.48	99.52	4.35
3	10300-34800+5400	59	4893	4952	1.19	98.81	1.60
4	15600-39100+5400	487	3987	4474	10.89	89.11	1.44
5	15600-39100+5700	8	252	260	3.08	96.92	0.08
6	15600-39100+6000	5	603	608	0.82	99.18	0.20
7	15600-39100+6600	130	2263	2393	5.43	94.57	0.77
8	15600-39100+7000	1	37	38	2.63	97.37	0.01
9	15600-39100+7400	10	269	279	3.58	96.42	0.09
10	15600-39100+7600	33	339	372	8.87	91.13	0.12
11	15600-39100+7800	11	660	671	1.64	98.36	0.22
12	15600-39100+8000	0	42	42	0.00	100.00	0.01
13	15600-39100+8200	0	9	9	0.00	100.00	0.00
14	15600-39100+8400	26	244	270	9.63	90.37	0.09
15	37400-67000+8600	51	1408	1459	3.50	96.50	0.47
16	37400-67000+8700	29	136	165	17.58	82.42	0.05
17	37400-67000+8800	3	49	52	5.77	94.23	0.02
18	37400-67000+8900	3	193	196	1.53	98.47	0.06
19	37400-67000+9000	1	199	200	0.50	99.50	0.06
20	37400-67000+10000	19	325	344	5.52	94.48	0.11
21	Any Other	228	419	647	35.24	64.76	0.21
	Total	1169	29759	30928	3.78	96.22	9.96
Pay Scale Wise Distribution of Group B Employees							
22	10300-34800+3800	31	2660	2691	1.15	98.85	0.87
23	10300-34800+4200	72	18955	19027	0.38	99.62	6.13
24	10300-34800+4400	2215	16078	18293	12.11	87.89	5.89
25	10300-34800+4600	157	5105	5262	2.98	97.02	1.70
26	10300-34800+4800	412	6196	6608	6.23	93.77	2.13
27	10300-34800+5000	62	2875	2937	2.11	97.89	0.95
28	Any Other	83	1429	1512	5.49	94.51	0.49
	Total	3032	53298	56330	5.38	94.62	18.15
Pay Scale Wise Distribution of Group C Employees							
29	5910-20200+1900	75	3317	3392	2.21	97.79	1.09
30	5910-20200+1950	42	805	847	4.96	95.04	0.27
31	5910-20200+2000	26	1252	1278	2.03	97.97	0.41
32	5910-20200+2400	488	7803	8291	5.89	94.11	2.67
33	5910-20200+2800	36	4340	4376	0.82	99.18	1.41
34	5910-20200+3000	43	1774	1817	2.37	97.63	0.59
35	10300-34800+3200	2556	85144	87700	2.91	97.09	28.26
36	10300-34800+3600	671	21538	22209	3.02	96.98	7.16
37	10300-34800+3800	8	474	482	1.66	98.34	0.16
38	10300-34800+4200	0	4078	4078	0.00	100.00	1.31
39	10300-34800+4400	0	549	549	0.00	100.00	0.18
40	10300-34800+4600	0	214	214	0.00	100.00	0.07
41	10300-34800+4800	0	21	21	0.00	100.00	0.01
42	Any Other	19	13367	13386	0.14	99.86	4.31
	Total	3964	144676	148640	2.67	97.33	47.89
Pay Scale Wise Distribution of Group D Employees							
43	4900-10680+1300	13	2040	2053	0.63	99.37	0.66
44	4900-10680+1400	33	2262	2295	1.44	98.56	0.74
45	4900-10680+1650	1719	31533	33252	5.17	94.83	10.71
46	Any Other	318	3282	3600	8.83	91.17	1.16
	Total	2083	39117	41200	5.06	94.94	13.27

Sr.No	Pay Scale/GradePay	State Headquarter (Chandigarh)	District Level	Total	%age of Employees Working at Chandigarh	%age of Employees Working at District Level	% to Total Employees
Pay Scale Wise Distribution of Contract Basis Employees							
47	1-5000	10	2794	2804	0.36	99.64	0.90
48	5001-10000	16	6488	6504	0.25	99.75	2.10
49	10000 & Above	278	7073	7351	3.78	96.22	2.37
50	Any Other	23	190	213	10.80	89.20	0.07
	Total	327	16545	16872	1.94	98.06	5.44
Pay Scale Wise Distribution of Contingency Paid Employees							
51	1-5000	3	3729	3732	0.08	99.92	1.20
52	5001-10000	5	2240	2245	0.22	99.78	0.72
53	10000 & Above	47	4766	4813	0.98	99.02	1.55
54	Any Other	0	3	3	0.00	100.00	0.00
	Total	55	10738	10793	0.51	99.49	3.48
Pay Scale Wise Distribution of Any Others Employees							
55	1-5000	0	2497	2497	0.00	100.00	0.80
56	5001-10000	0	1879	1879	0.00	100.00	0.61
57	10000 & Above	364	844	1208	30.13	69.87	0.39
58	Any Other	0	35	35	0.00	100.00	0.01
	Total	364	5255	5619	6.48	93.52	1.81
	Grand Total	10994	299388	310382	3.54	96.46	100.00

Table 03
District-wise/Group-Wise Distribution of Punjab Govt. Employees as on 31st March :2019

Sr.No	District Name	Group A	Group B	Group C	Group D	Contract Basis	Contingency Paid	Any Others	Worked Charged	Total	%age
1	Amritsar	905	7454	10129	2810	97	2	0	69	21466	6.92
2	Bathinda	1350	1682	8999	2061	448	2887	6	0	17433	5.62
3	Faridkot	1963	1360	3090	971	394	1208	1125	0	10111	3.26
4	Fatehgarh Sahib	421	1845	2988	844	114	298	292	0	6802	2.19
5	Firozpur	2150	2529	3934	1678	1133	563	215	0	12202	3.93
6	Gurdaspur	3746	3855	5241	1914	486	1302	0	0	16544	5.33
7	Hoshiarpur	1760	993	11454	4313	2677	29	0	0	21226	6.84
8	Jalandhar	1111	2883	20546	2482	1500	56	202	0	28780	9.27
9	Kapurthala	1945	1455	2880	1033	406	771	0	0	8490	2.74
10	Ludhiana	2442	2239	21699	4572	2984	187	830	0	34953	11.26
11	Mansa	2028	1788	2764	979	461	121	884	80	9105	2.93
12	Moga	314	4346	2718	813	619	27	16	0	8853	2.85
13	Sri Muktsar Sahib	677	2442	3964	614	616	181	9	0	8503	2.74
14	SBS Nagar	1586	1371	2191	920	460	71	2	0	6601	2.13
15	Patiala	1942	3525	12487	3986	504	388	111	0	22943	7.39
16	Rupnagar	436	2890	2927	1442	608	783	25	21	9132	2.94
17	Sangrur	583	1601	9704	1790	1016	502	215	0	15411	4.97
18	SAS Nagar (Mohali)	2455	2664	4037	1488	376	479	485	0	11984	3.86
19	Barnala	1304	602	2079	525	531	240	336	0	5617	1.81
20	Tarn Taran	258	1797	2885	704	570	63	242	0	6519	2.10
21	Fazilka	232	2171	4444	684	160	135	26	0	7852	2.53
22	Pathankot	151	1806	3441	2399	385	445	234	0	8861	2.85
23	Chandigarh	1169	3032	3964	2083	327	55	364	0	10994	3.54
Total		30928	56330	148565	41105	16872	10793	5619	170	310382	100

Table 04
District-Department Wise Distribution of Punjab Government Employees as on 31st March :2019

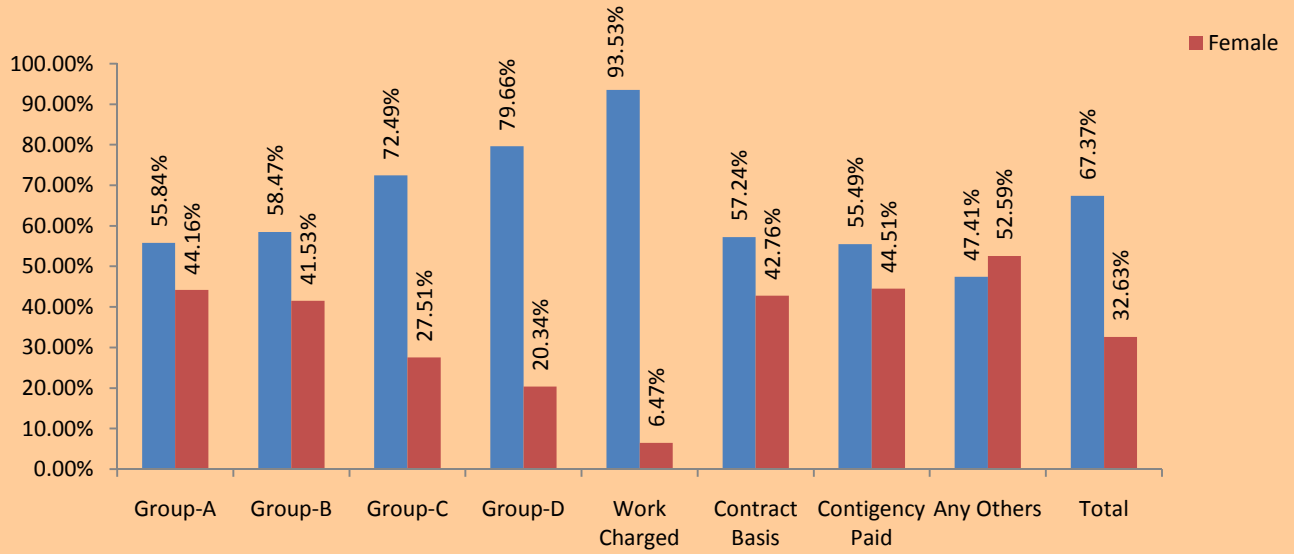
Sr. No	Department Name	Amritsar	Bathinda	Faridkot	Fatehgarh Sahib	Firozpur	Gurdaspur	Hoshiarpur	Jalandhar	Kapurthala	Ludhiana	Mansa	Moga	Sri Muktsar Sahib	SBS Nagar	Patiala	Rupnagar	Sangrur	SAS Nagar	Barnala	Tarn Taran	Fazilka	Pathankot	Total	Chandigarh	Total	
1	Pb Vidhan Sabha	0	0	0	0	0	0	0	0	0	0	0	0	0	0	0	0	0	0	0	0	0	0	0	0	323	323
2	Pb. Raj Bhawan	0	0	0	0	0	0	0	0	0	0	0	0	0	0	0	0	0	0	0	0	0	0	0	0	129	129
3	Legal Remembrancer	0	0	0	0	14	0	0	0	0	0	0	0	0	0	0	0	0	0	0	0	0	0	0	14	53	67
4	Advocate General	0	43	0	0	0	0	0	0	0	0	0	0	0	0	0	0	0	0	0	0	0	0	0	43	390	433
5	Prosecution & Litigation	33	0	28	0	40	28	28	56	21	12	16	21	18	18	64	35	40	0	13	0	0	11	482	79	561	
6	Justice	325	568	210	270	468	338	120	403	291	1330	125	219	161	210	556	271	432	443	126	0	0	51	6917	0	6917	
7	Election	18	18	14	7	16	15	14	14	12	21	14	13	14	8	28	11	17	11	10	12	10	11	308	61	369	
8	Language	3	4	4	4	3	3	3	9	4	3	4	0	0	0	95	4	6	0	0	0	0	0	0	149	0	149
9	Financial Commissioner	0	0	0	0	0	0	0	0	0	0	0	0	0	0	0	0	0	0	0	0	0	0	0	0	564	564
10	Revenue	606	401	259	329	373	484	529	701	312	734	175	299	108	188	443	254	589	264	326	388	290	121	8173	14	8187	
11	Excise & Taxation	125	85	36	63	74	86	58	164	48	276	40	25	37	29	189	48	126	101	4	0	38	0	1652	0	1652	
12	Punjab Public Service Commission	0	0	0	0	0	0	0	0	0	0	0	0	0	0	93	0	0	0	0	0	0	0	93	0	93	
13	Civil Secretariate	0	0	0	0	0	0	0	0	0	0	0	0	0	0	0	0	0	0	0	0	0	0	0	2089	2089	
14	Police	5352	3051	1500	1109	2196	3767	2500	11205	1854	7712	1944	1649	1841	1311	9414	1286	2548	2535	1116	2060	1489	1437	68876	1316	70192	
15	Home Guard	53	43	1148	225	528	1217	27	940	304	56	4	0	160	0	37	608	43	415	0	42	36	0	5886	45	5931	
16	Jails	263	167	203	0	227	75	87	201	214	365	0	30	30	0	334	116	184	0	37	42	23	17	2615	91	2706	
17	Treasury & Accounts	45	26	17	15	26	35	24	43	17	48	15	13	9	8	47	24	35	24	13	10	0	5	499	79	578	
18	Local Fund Examiner	0	10	5	0	7	0	0	22	0	8	0	0	0	0	25	1	0	0	0	0	0	0	0	78	49	127
19	Controller Internal Audit	6	6	0	0	0	3	4	8	4	18	0	0	0	0	14	5	5	0	0	0	0	0	73	0	73	
20	Institutional Finance & Banking	0	0	0	0	0	0	0	6	0	0	0	0	0	0	0	0	0	0	0	0	0	0	6	8	14	
21	Printing & Stationary	4	0	0	0	0	0	6	11	0	2	0	0	0	0	375	0	0	93	0	0	0	0	491	0	491	
22	Local Government	11	12	0	0	11	0	0	0	0	9	0	0	0	0	12	0	0	0	0	0	0	0	55	67	122	
23	Subordinate Services Board	0	0	0	0	0	0	0	0	0	0	0	0	0	0	0	0	0	27	0	0	0	0	27	0	27	
24	General Education	6550	5667	3446	2756	4600	7772	11943	7263	3427	14606	4356	4544	4631	2513	3425	3129	7491	3791	2563	1311	4389	2148	112321	0	112321	

Sr. No	Department Name	Amritsar	Bathinda	Faridkot	Fatehgarh Sahib	Firozpur	Gurdaspur	Hoshiarpur	Jalandhar	Kapurthala	Ludhiana	Mansa	Moga	Sri Muktsar Sahib	SBS Nagar	Patiala	Rupnagar	Sangrur	SAS Nagar	Barnala	Tarn Taran	Fazilka	Pathankot	Total	Chandigarh	Total
25	Technical Education & Industrial Training	188	191	73	88	100	463	199	427	80	579	55	120	17	114	244	138	127	138	20	278	55	99	3793	202	3995
26	Sports	12	18	26	11	6	25	11	32	8	55	6	13	16	13	53	12	14	44	7	10	13	11	416	29	445
27	Youth Services	3	3	3	2	3	2	2	10	0	3	2	0	2	0	2	3	2	0	2	0	1	0	45	256	301
28	Cultural Affairs Museum Archaeology & Archives	0	0	0	0	0	0	5	0	0	0	2	0	0	0	22	0	5	0	0	0	0	0	34	35	69
29	Health & Family Welfare	3269	1416	795	673	900	0	2400	2482	793	2946	0	772	635	633	1439	681	1468	705	684	965	117	0	23773	589	24362
30	Water Supply Public Health	577	601	74	152	195	292	470	316	58	447	806	238	0	286	809	492	621	1220	31	313	454	209	8661	0	8661
31	Town & Country Planning	20	19	15	18	13	12	9	26	16	30	0	0	0	0	29	11	16	82	0	0	0	0	316	0	316
32	Chief Architect	0	0	0	0	0	0	0	0	0	0	0	0	0	0	38	0	0	0	0	0	0	0	38	68	106
33	Information & Publicity	16	14	6	9	0	0	9	24	6	10	8	8	7	0	18	7	8	10	8	6	0	4	178	179	357
34	Social Welfare & Welfare of SCs & BCs	43	2849	1073	316	60	75	306	735	387	817	315	35	3	66	493	78	101	364	277	22	59	171	8645	165	8810
35	Labour	18	23	2	11	25	7	7	24	5	13	2	14	0	0	0	0	11	14	0	7	7	8	198	59	257
36	Employment	20	22	16	9	22	16	6	21	11	34	11	6	6	5	0	15	20	14	7	0	15	6	282	54	336
37	Subordinate Services Selection Board	0	0	0	0	0	0	0	0	0	0	0	0	0	0	0	0	0	0	0	0	0	0	0	0	0
38	Sainik Welfare	11	7	16	8	5	17	10	16	9	14	6	5	15	5	0	20	9	0	0	0	0	15	188	216	404
39	Hospitality	0	5	4	0	0	0	0	16	0	12	509	0	0	0	0	0	0	0	0	0	0	0	546	250	796
40	Rehabilitation	0	0	0	0	0	0	0	0	0	0	0	0	0	0	0	0	0	0	0	0	0	0	0	0	0
41	Administrative General Official Trustee & Charitab	0	0	0	0	0	0	0	0	0	0	0	0	0	0	0	0	0	5	0	0	0	0	5	0	5
42	Information Technology	0	0	0	0	11	0	12	23	0	4	0	0	0	0	0	0	0	0	0	0	0	0	50	21	71
43	Agriculture	179	135	97	61	95	164	173	140	90	238	81	79	67	61	123	65	91	351	32	109	76	60	2567	29	2596
44	Horticulture	55	97	18	27	8	36	58	73	28	39	17	14	21	11	111	20	18	56	0	15	0	72	794	0	794
45	Soil Conservation	70	57	60	14	93	96	100	66	20	61	46	14	54	34	46	20	60	113	0	39	0	0	1063	55	1118
46	Animal Husbandary	292	767	140	148	0	441	306	439	147	627	214	193	186	140	347	162	341	262	123	141	173	9	5598	0	5598

Sr. No	Department Name	Amritsar	Bathinda	Faridkot	Fatehgarh Sahib	Firozpur	Gurdaspur	Hoshiarpur	Jalandhar	Kapurthala	Ludhiana	Mansa	Moga	Sri Muktsar Sahib	SBS Nagar	Patiala	Rupnagar	Sangrur	SAS Nagar	Barnala	Tarn Taran	Fazilka	Pathankot	Total	Chandigarh	Total	
47	Dairy Development	17	6	3	8	6	7	8	10	7	19	5	4	4	5	12	9	21	31	0	5	0	1	188	0	188	
48	Fisheries	0	13	11	18	15	32	16	10	34	16	5	5	6	9	18	18	29	28	0	0	0	0	283	0	283	
49	Forest	111	81	0	32	102	90	168	86	32	15	37	0	83	101	97	203	57	303	0	0	0	35	1633	0	1633	
50	Cooperation	96	93	65	77	70	21	83	111	24	196	45	28	0	5	159	65	106	56	16	33	24	0	1373	190	1563	
51	Rural Dev. & Panchayats	708	130	36	56	109	162	152	97	20	156	34	41	57	30	225	49	89	43	18	49	69	57	2387	0	2387	
52	Consolidation	0	0	0	0	0	0	0	0	0	0	0	0	0	0	0	0	0	0	17	0	0	0	17	0	17	
53	Colonization	0	0	0	0	0	0	0	0	0	0	0	0	0	0	0	0	0	0	0	0	0	0	0	0	40	40
54	Irrigation	699	468	447	0	1009	0	667	528	0	1167	0	0	115	385	1736	400	298	102	0	0	412	3790	12223	1623	13846	
55	Chief Electrical Inspector	0	0	0	0	0	0	0	0	0	0	0	0	0	0	47	0	0	0	0	0	0	0	47	61	108	
56	Industries	18	37	10	18	16	30	22	80	21	141	11	16	15	11	59	1	20	26	0	0	0	0	552	247	799	
57	Transport	762	12	8	0	543	175	200	935	0	829	0	264	0	304	24	599	14	19	0	485	0	414	5587	656	6243	
58	Civil Aviation	0	0	0	0	0	0	0	470	0	0	0	0	0	0	16	0	0	0	0	0	0	0	486	27	513	
59	Public Works Deptt. B&R	730	87	134	169	179	438	387	279	119	1261	4	71	39	41	1425	186	135	229	77	79	90	65	6224	0	6224	
60	Tourism	0	0	0	0	0	0	0	0	0	0	0	0	0	0	0	5	0	0	0	0	0	0	5	58	63	
61	ESO Punjab	23	18	11	10	20	17	16	24	14	24	0	12	5	11	25	11	11	7	11	21	12	10	313	110	423	
62	Food Civil Supplies & Consumer Affairs	135	161	98	87	0	93	81	228	52	0	184	88	141	42	175	68	203	56	79	77	0	24	2072	251	2323	
63	Punjab State Planning Board	0	0	0	0	0	0	0	0	0	0	0	0	0	0	0	0	0	0	0	0	0	0	0	0	77	77
64	Lotteries & Small Savings	0	2	0	2	3	3	0	6	1	0	0	0	0	0	0	2	0	2	0	0	0	0	21	46	67	
65	Lok Pal	0	0	0	0	11	0	0	0	0	0	0	0	0	0	0	0	0	0	0	0	0	0	11	19	30	
66	Pensioners & Welfare of Pensioners	0	0	0	0	0	7	0	0	0	0	7	0	0	4	0	0	0	0	0	0	0	0	18	12	30	
67	Finance	0	0	0	0	0	0	0	0	0	0	0	0	0	0	0	0	0	0	0	0	0	0	0	13	13	
	Total	21466	17433	10111	6802	12202	16544	21226	28780	8490	34953	9105	8853	8503	6601	22943	9132	15411	11984	5617	6519	7852	8861	299388	10994	310382	

BOX-3: Punjab Government Employees

Percentage of Group-wise and Sex-wise Distribution of Government Employees as on 31st March ,2019



Group-wise distribution of Government Employees as on 31st March, 2019

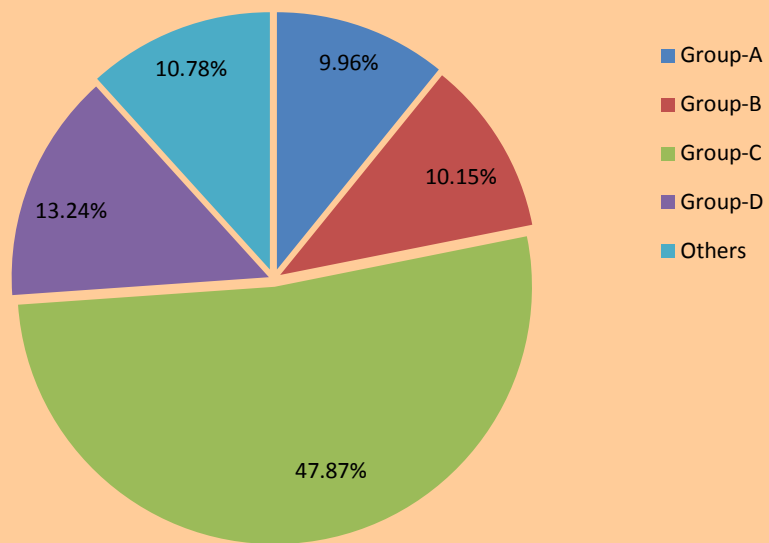


Table 05
Department-wise/Group-wise/Sex-wise Distribution of Punjab Govt. Employees as on 31st March: 2019

Sr.	Name of Department	Group A		Group B		Group C		Group D		Work Charged		Contract Basis		Contingency Paid		Any Other		Total		Grand Total	%age to Grand Total	
		Male	Female	Male	Female	Male	Female	Male	Female	Male	Female	Male	Female	Male	Female	Male	Female	Male	Female		Male	Female
1	Pb Vidhan Sabha	34	19	40	19	112	28	57	5	0	0	7	2	0	0	0	0	250	73	323	77	23
2	Pb. Raj Bhawan	6	2	9	1	31	5	59	4	0	0	5	1	4	2	0	0	114	15	129	88	12
3	Legal Remembrancer	9	2	7	4	7	2	15	0	0	0	2	2	4	3	7	3	51	16	67	76	24
4	Advocate General	94	48	49	15	99	37	46	2	0	0	25	13	2	3	0	0	315	118	433	73	27
5	Prosecution & Litigation	87	11	156	43	86	90	51	6	0	0	9	6	6	5	3	2	398	163	561	71	29
6	Justice	369	222	802	260	1675	680	2040	287	0	0	187	89	90	44	73	99	5236	1681	6917	76	24
7	Election	22	6	71	25	65	16	32	5	0	0	57	13	20	7	23	7	290	79	369	79	21
8	Language	5	12	24	22	24	14	31	7	0	0	1	1	3	4	1	0	89	60	149	60	40
9	Financial Commissioner	47	32	109	62	116	55	78	9	0	0	55	1	0	0	0	0	405	159	564	72	28
10	Revenue	202	37	752	218	4393	762	1250	312	0	0	130	51	62	6	10	2	6799	1388	8187	83	17
11	Excise & Taxation	150	62	315	84	480	178	299	45	0	0	13	10	4	4	5	3	1266	386	1652	77	23
12	Punjab Public Service Commission	10	8	17	8	11	1	13	1	0	0	1	0	0	0	22	1	74	19	93	80	20
13	Civil Secretariate	192	107	483	221	413	225	258	30	0	0	0	0	0	0	155	5	1501	588	2089	72	28
14	Police	466	78	4363	587	51974	9885	1585	454	66	3	257	40	328	56	50	0	59089	11103	70192	84	16
15	Home Guard	24	1	47	12	405	59	157	22	0	0	887	9	3973	204	130	1	5623	308	5931	95	5
16	Jails	46	2	146	15	1984	106	161	28	0	0	137	6	18	5	52	0	2544	162	2706	94	6
17	Treasury & Accounts	33	11	93	37	204	69	64	14	0	0	16	3	17	7	6	4	433	145	578	75	25
18	Local Fund Examiner	23	4	27	22	19	3	15	5	0	0	3	1	3	2	0	0	90	37	127	71	29
19	Controller Internal Audit	25	5	21	4	3	2	10	0	0	0	1	0	0	2	0	0	60	13	73	82	18
20	Institutional Finance & Banking	5	2	1	1	0	0	1	1	0	0	0	0	0	0	2	1	9	5	14	64	36
21	Printing & Stationary	7	3	31	12	306	8	74	20	0	0	18	5	7	0	0	0	443	48	491	90	10
22	Local Government	6	2	37	9	31	12	21	3	0	0	1	0	0	0	0	0	96	26	122	79	21
23	Subordinate Services Board	4	0	10	0	6	1	6	0	0	0	0	0	0	0	0	0	26	1	27	96	4

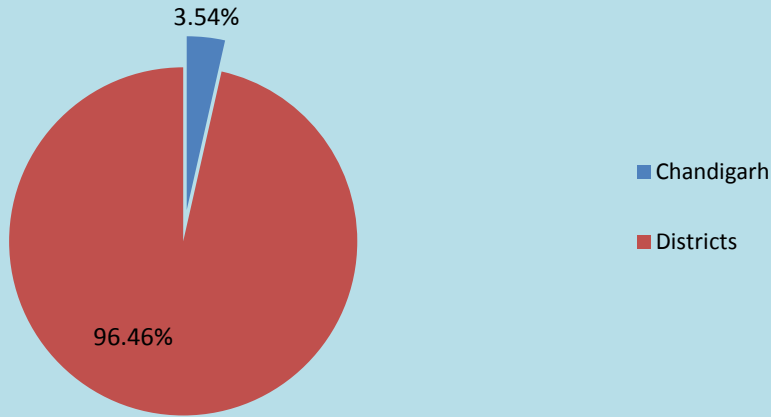
Sr.	Name of Department	Group A		Group B		Group C		Group D		Work Charged		Contract Basis		Contingency Paid		Any Other		Total		Grand Total	%age to Grand Total		
		Male	Female	Male	Female	Male	Female	Male	Female	Male	Female	Male	Female	Male	Female	Male	Female	Male	Female		Male	Female	
24	General Education	8885	10576	14558	17234	22204	19999	4724	3368	0	0	2507	5691	361	725	617	872	53856	58465	112321	48	52	
25	Technical Education & Industrial Training	408	181	1041	315	556	362	499	179	0	0	95	47	44	13	242	13	2885	1110	3995	72	28	
26	Sports	13	2	23	12	153	46	56	7	0	0	93	20	3	4	13	0	354	91	445	80	20	
27	Youth Services	9	0	16	0	64	8	72	0	0	0	1	1	1	1	127	1	290	11	301	96	4	
28	Cultural Affairs Museum Archaeology & Archives	3	0	4	8	16	6	17	5	0	0	10	0	0	0	0	0	50	19	69	72	28	
29	Health & Family Welfare	2421	1567	2356	2153	4371	4091	3831	1638	0	0	319	729	171	415	125	175	13594	10768	24362	56	44	
30	Water Supply Public Health	245	25	641	113	2255	377	3291	228	74	4	1015	142	207	9	24	11	7752	909	8661	90	10	
31	Town & Country Planning	61	14	23	24	72	31	67	14	0	0	0	0	7	1	1	1	231	85	316	73	27	
32	Chief Architect	18	19	10	6	16	11	19	4	0	0	3	0	0	0	0	0	66	40	106	62	38	
33	Information & Publicity	29	4	49	23	132	40	69	5	0	0	0	0	4	2	0	0	283	74	357	79	21	
34	Social Welfare & Welfare of SCs & BCs	82	36	269	276	351	1062	331	97	2	0	242	180	199	3144	836	1703	2312	6498	8810	26	74	
35	Labour	27	4	29	13	93	35	38	7	0	0	3	3	0	0	3	2	193	64	257	75	25	
36	Employment	22	15	30	11	111	52	67	4	0	0	7	7	4	6	0	0	241	95	336	72	28	
37	Subordinate Services Selection Board	0	0	0	0	0	0	0	0	0	0	0	0	0	0	0	0	0	0	0	0	0	0
38	Sainik Welfare	28	0	43	10	170	37	57	8	0	0	32	12	2	1	3	1	335	69	404	83	17	
39	Hospitality	46	34	14	3	206	106	255	54	0	0	1	1	8	32	16	20	546	250	796	69	31	
40	Rehabilitation	0	0	0	0	0	0	0	0	0	0	0	0	0	0	0	0	0	0	0	0	0	0
41	Administrative General Official Trustees & Charities	1	0	1	0	1	0	2	0	0	0	0	0	0	0	0	0	5	0	5	100	0	
42	Information Technology	9	0	8	2	26	7	7	6	0	0	0	0	1	1	3	1	54	17	71	76	24	
43	Agriculture	622	69	186	96	754	199	521	95	0	0	33	5	7	7	1	1	2124	472	2596	82	18	
44	Horticulture	119	28	37	11	211	24	314	43	0	0	1	2	3	1	0	0	685	109	794	86	14	
45	Soil Conservation	166	35	125	39	439	66	203	26	0	0	2	0	1	1	13	2	949	169	1118	85	15	
46	Animal Husbandary	852	166	515	52	1378	159	1419	178	0	0	566	1	222	55	32	3	4984	614	5598	89	11	
47	Dairy Development	10	3	35	8	74	14	35	3	0	0	1	0	1	0	1	3	157	31	188	84	16	
48	Fisheries	4	0	71	14	36	26	100	10	0	0	1	0	17	2	1	1	230	53	283	81	19	

Sr.	Name of Department	Group A		Group B		Group C		Group D		Work Charged		Contract Basis		Contingency Paid		Any Other		Total		Grand Total	%age to Grand Total	
		Male	Female	Male	Female	Male	Female	Male	Female	Male	Female	Male	Female	Male	Female	Male	Female	Male	Female		Male	Female
49	Forest	50	7	219	56	573	185	488	34	0	0	10	9	0	0	1	1	1341	292	1633	82	18
50	Cooperation	74	15	653	231	228	72	219	61	0	0	1	0	5	4	0	0	1180	383	1563	75	25
51	Rural Dev. & Panchayats	151	17	319	94	1366	182	150	30	0	0	35	9	29	2	0	3	2050	337	2387	86	14
52	Consolidation	2	0	5	2	6	0	2	0	0	0	0	0	0	0	0	0	15	2	17	88	12
53	Colonization	1	0	5	0	16	8	3	2	0	0	0	0	0	0	4	1	29	11	40	72	28
54	Irrigation	418	60	1234	322	4472	601	6000	533	0	0	194	2	7	2	1	0	12326	1520	13846	89	11
55	Chief Electrical Inspector	21	1	12	9	23	10	12	4	0	0	0	0	0	0	15	1	83	25	108	77	23
56	Industries	66	8	183	78	238	72	127	25	0	0	0	0	0	0	1	1	615	184	799	77	23
57	Transport	64	8	552	43	2548	264	318	31	0	0	2298	0	112	0	3	2	5895	348	6243	94	6
58	Civil Aviation	6	1	83	24	125	18	183	65	0	0	6	0	2	0	0	0	405	108	513	79	21
59	Public Works Deptt. B&R	361	34	753	137	1537	263	2578	289	17	4	206	29	9	4	2	1	5463	761	6224	88	12
60	Tourism	0	0	2	5	9	3	9	0	0	0	26	5	0	0	4	0	50	13	63	79	21
61	ESO Punjab	16	10	49	45	75	47	43	8	0	0	25	49	15	15	21	5	244	179	423	58	42
62	Food Civil Supplies & Consumer Affairs	66	29	1155	227	306	131	269	37	0	0	91	12	0	0	0	0	1887	436	2323	81	19
63	Punjab State Planning Board	11	9	3	3	11	7	11	0	0	0	3	2	0	0	15	2	54	23	77	70	30
64	Lotteries & Small Savings	7	1	8	6	10	5	4	1	0	0	16	2	4	3	0	0	49	18	67	73	27
65	Lok Pal	4	0	2	3	12	1	6	0	0	0	2	0	0	0	0	0	26	4	30	87	13
66	Pensioners & Welfare of Pensioners	2	3	5	4	7	3	4	0	0	0	1	1	0	0	0	0	19	11	30	63	37
67	Finance	4	1	0	1	1	1	3	0	0	0	0	0	2	0	0	0	10	3	13	77	23
	Total	17270	13658	32936	23394	107696	40869	32746	8359	159	11	9658	7214	5989	4804	2664	2955	209118	101264	310382	67	33

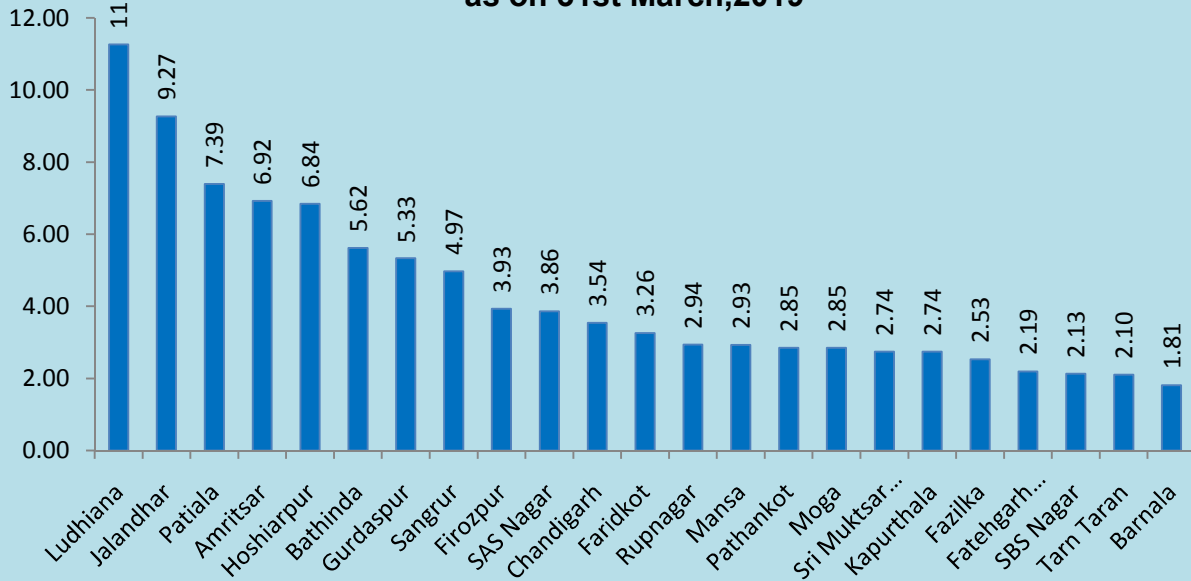
BOX-4(A): Distribution of Government Employees in District and State

Headquarter, Chandigarh

Government Employees working at Chandigarh and in Districts



Government Employees working at Chandigarh and at Districts as on 31st March, 2019



BOX-4(B): Distribution of Government Employees in Districts and State
Headquarter, Chandigarh

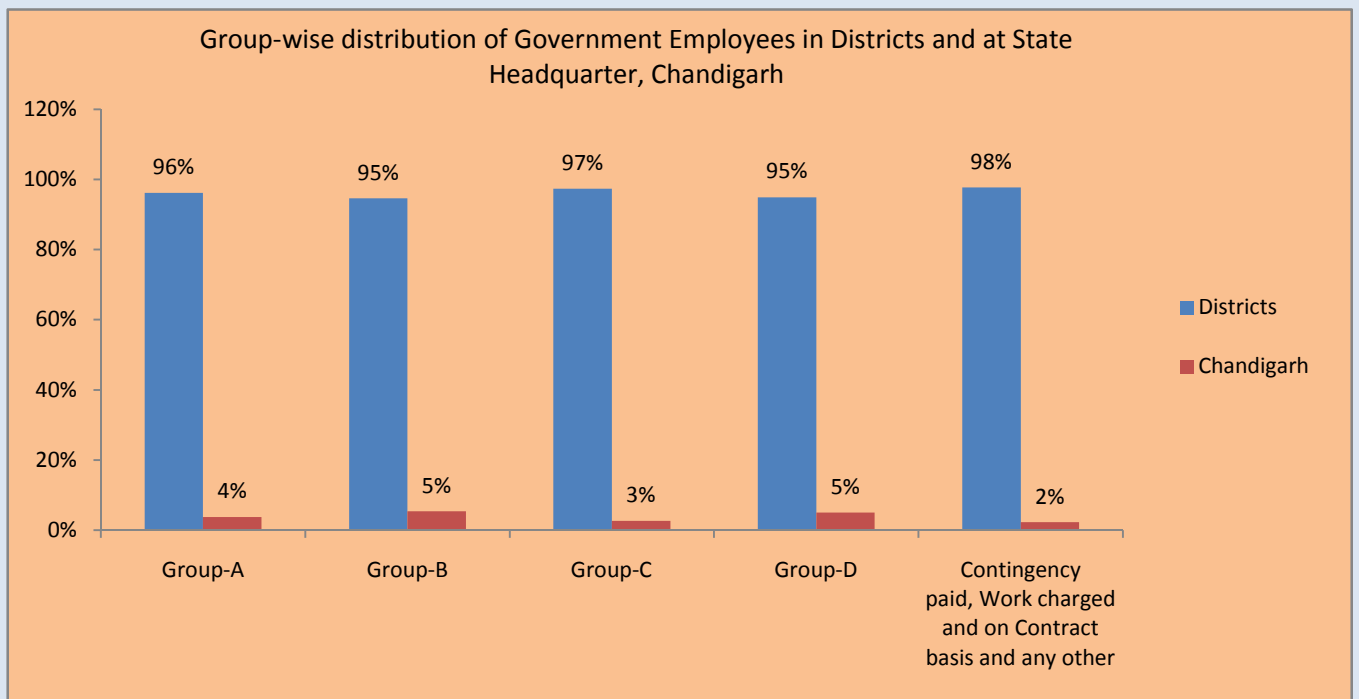
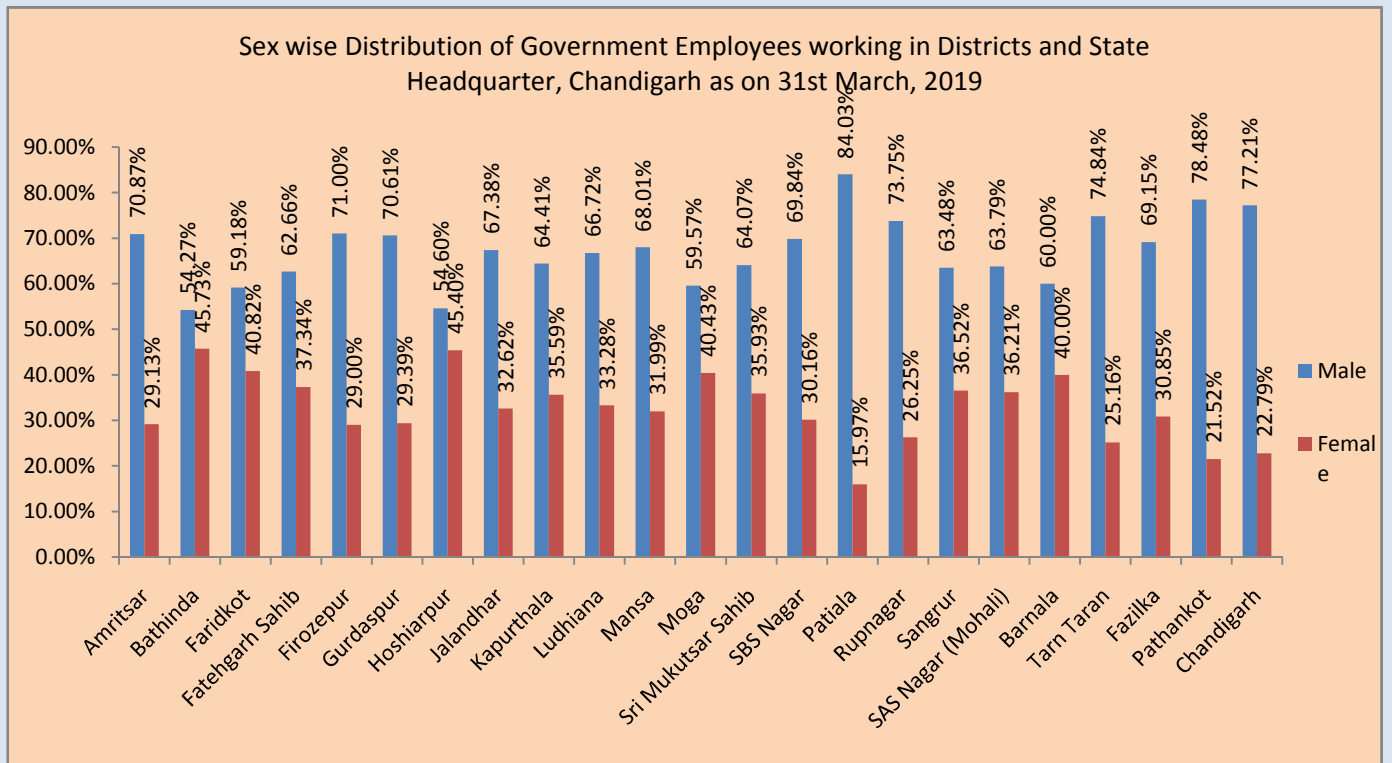
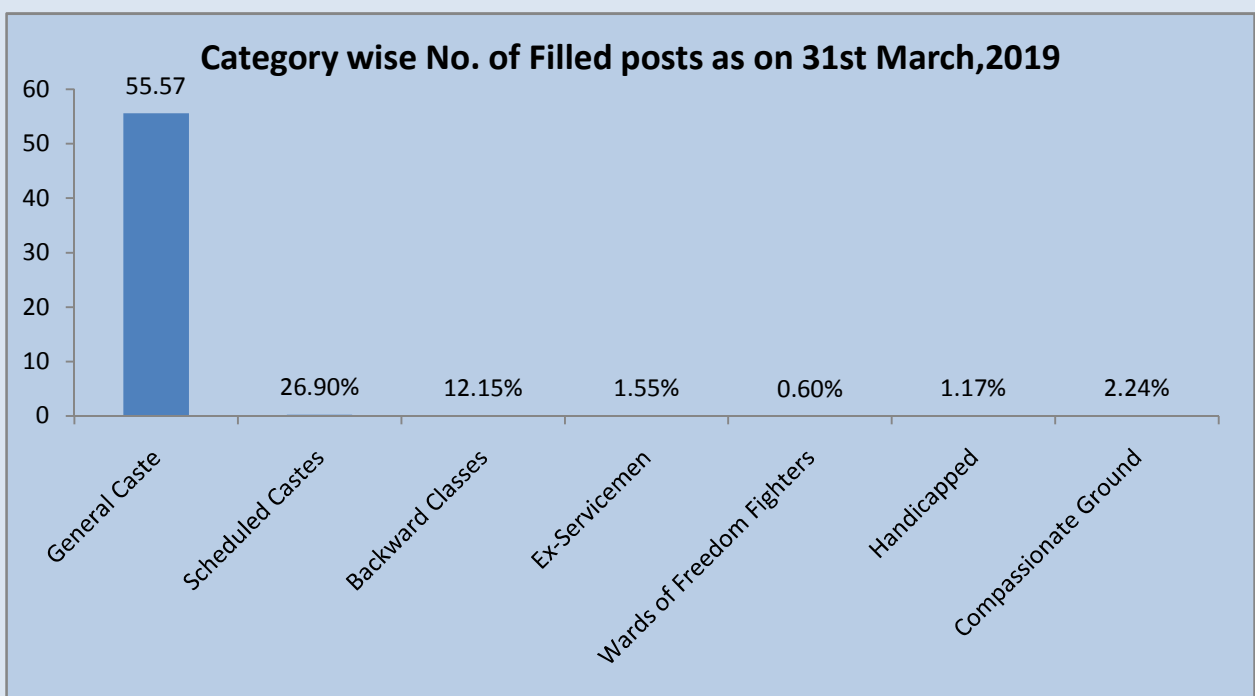
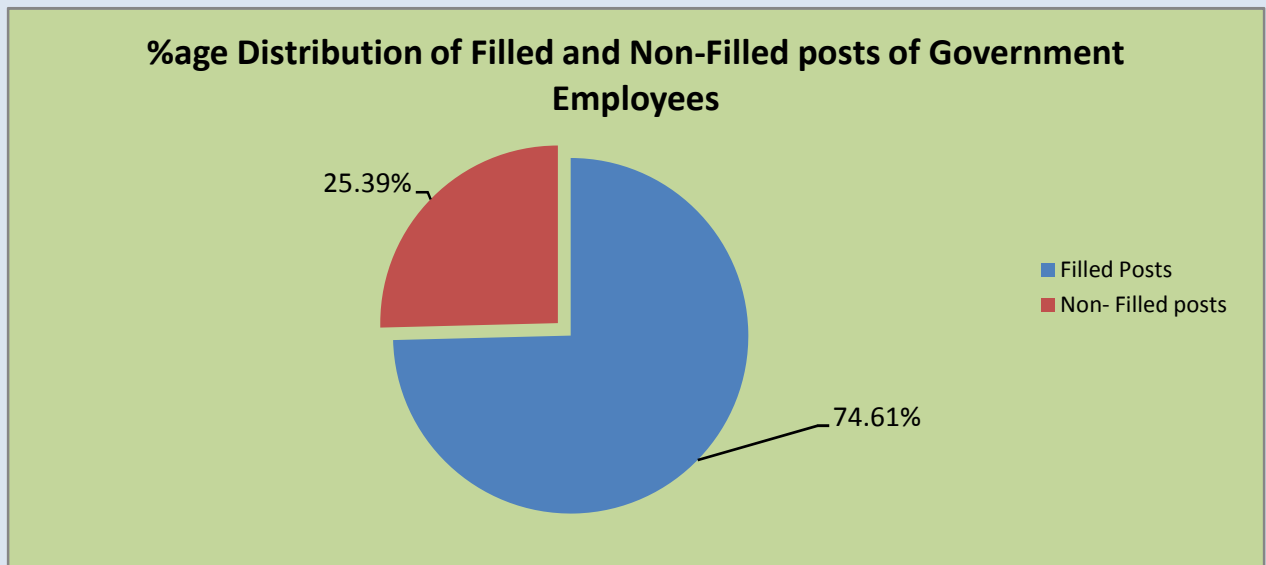


Table 06
District-wise/Group-wise/Sex-wise Distribution of Puniab Govt. Employees as on 31st March: 2019

Sr.No	District Name	Group A		Group B		Group C		Group D		Worked Charged		Contract Basis		Contingency Paid		Any Other		Total		Grand Total	%age to Grand Total	
		Male	Female	Male	Female	Male	Female	Male	Female	Male	Female	Male	Female	Male	Female	Male	Female	Male	Female		Male	Female
1	Amritsar	639	266	3770	3684	8372	1757	2273	537	66	3	92	5	2	0	0	0	15212	6254	21466	70.87	29.13
2	Bathinda	808	542	1209	473	5490	3509	1610	451	0	0	303	145	2852	35	6	0	9461	7972	17433	54.27	45.73
3	Faridkot	821	1142	765	595	2324	766	806	165	0	0	131	263	115	1093	44	1081	5984	4127	10111	59.18	40.82
4	Fatehgarh Sahib	296	125	906	939	1915	1073	699	145	0	0	34	80	30	268	144	148	4262	2540	6802	62.66	37.34
5	Firozpur	1080	1070	1643	886	3341	593	1449	229	0	0	464	669	19	544	142	73	8663	3539	12202	71.00	29.00
6	Gurdaspur	1831	1915	2164	1691	4618	623	1653	261	0	0	220	266	107	1195	0	0	11681	4863	16544	70.61	29.39
7	Hoshiarpur	1136	624	728	265	6244	5210	2394	1919	0	0	1068	1609	10	19	0	0	11589	9637	21226	54.60	45.40
8	Jalandhar	784	327	2159	724	13080	7466	1856	626	0	0	1406	94	27	29	77	125	19391	9389	28780	67.38	32.62
9	Kapurthala	914	1031	847	608	2375	505	820	213	0	0	166	240	425	346	0	0	5468	3022	8490	64.41	35.59
10	Ludhiana	1373	1069	1591	648	14681	7018	3277	1295	0	0	1535	1449	76	111	752	78	23320	11633	34953	66.72	33.28
11	Mansa	1196	832	1033	755	2280	484	814	165	76	4	296	165	55	66	431	453	6192	2913	9105	68.01	31.99
12	Moga	219	95	2006	2340	2167	551	590	223	0	0	267	352	10	17	8	8	5274	3579	8853	59.57	40.43
13	Sri Muktsar Sahib	431	246	1242	1200	2828	1136	501	113	0	0	339	277	81	100	7	2	5448	3055	8503	64.07	35.93
14	SBS Nagar	853	733	690	681	1860	331	782	138	0	0	403	57	49	22	0	2	4610	1991	6601	69.84	30.16
15	Patiala	1346	596	2668	857	11173	1314	3500	486	0	0	321	183	199	189	82	29	19279	3664	22943	84.03	15.97
16	Rupnagar	286	150	1638	1252	2326	601	1177	265	17	4	560	48	57	726	5	20	6735	2397	9132	73.75	26.25
17	Sangrur	411	172	1126	475	6035	3669	1540	250	0	0	374	642	284	218	79	136	9783	5628	15411	63.48	36.52
18	SAS Nagar (Mohali)	980	1475	1121	1543	3309	728	1289	199	0	0	337	39	32	447	161	324	7644	4340	11984	63.79	36.21
19	Barnala	548	756	408	194	1597	482	445	80	0	0	196	335	116	124	52	284	3370	2247	5617	60.00	40.00
20	Tarn Taran	209	49	1032	765	2322	563	581	123	0	0	441	129	7	56	238	4	4879	1640	6519	74.84	25.16
21	Fazilka	196	36	1313	858	3118	1326	569	115	0	0	111	49	30	105	18	8	5430	2422	7852	69.15	30.85
22	Pathankot	106	45	823	983	3137	304	2256	143	0	0	328	57	210	235	69	165	6954	1907	8861	78.48	21.52
23	Chandigarh	807	362	2054	978	3104	860	1865	218	0	0	266	61	11	44	349	15	8489	2505	10994	77.21	22.79
Total		17270	13658	32936	23394	107696	40869	32746	8359	159	11	9658	7214	5989	4804	2664	2955	209118	101264	310382	67.37	32.63

BOX-5(A): Reservation position in Punjab Government
Departments



BOX-5(B): Reservation position in Punjab Government

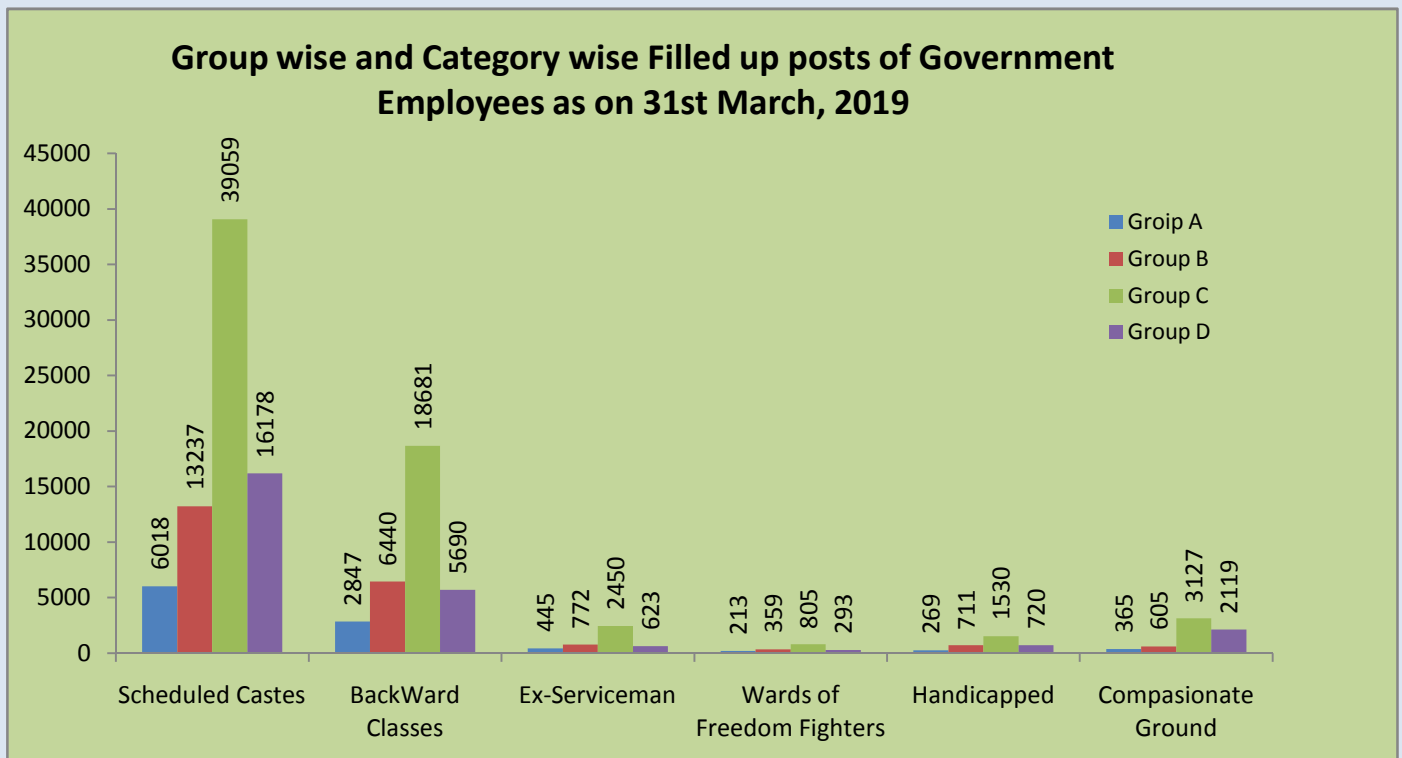
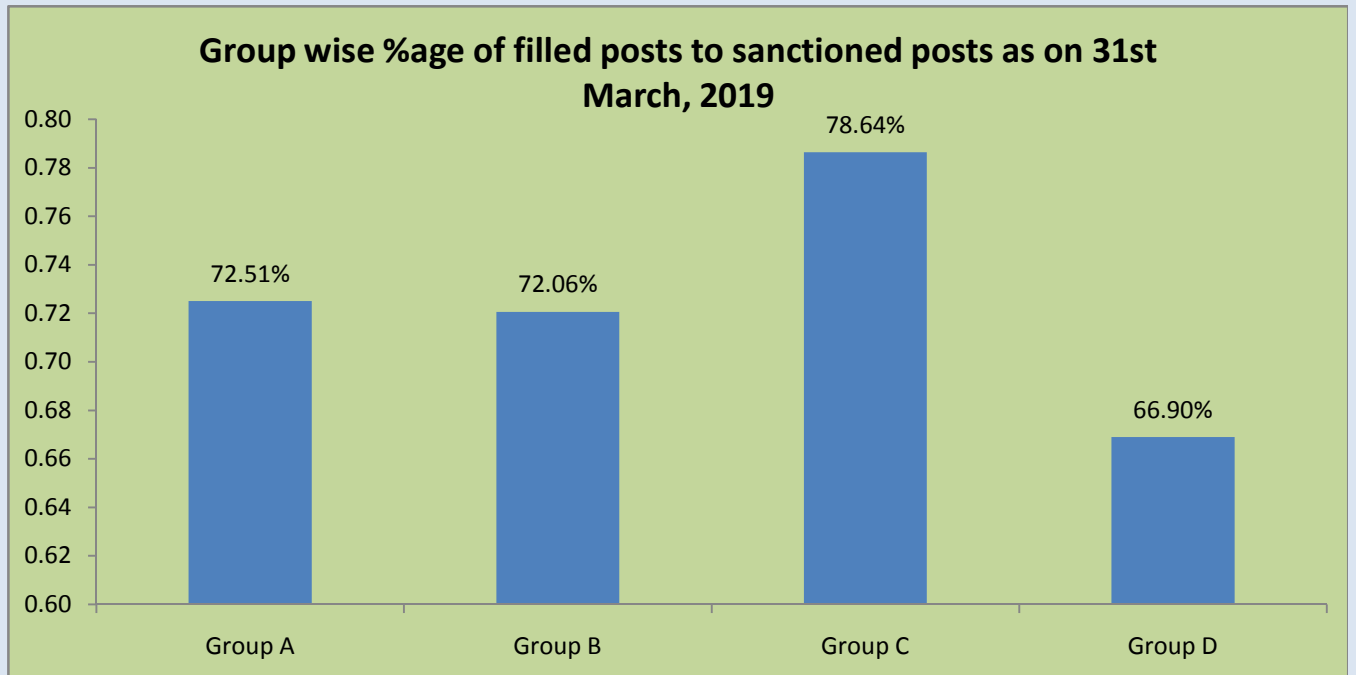


Table 07

Department-wise/Group-wise distribution of Scheduled Castes, Backward Classes, Ex-Servicemen, Wards of Freedom Fighters, Handicapped, Terrorist Affected and Compassionate Ground Employees as on 31st March: 2019

Table No - 7.1																	
Sr.No	Department Name	Ex Servieman				Wards of Freedom Fighters				Handicapped Employees				Compassionate Ground			
		Group A	Group B	Group C	Group D	Group A	Group B	Group C	Group D	Group A	Group B	Group C	Group D	Group A	Group B	Group C	Group D
1	Pb Vidhan Sabha	0	0	2	2	0	0	1	0	0	0	0	0	0	0	0	0
2	Pb. Raj Bhawan	0	0	0	2	0	0	0	0	0	0	0	0	0	0	0	0
3	Legal Remembrancer	0	0	0	0	0	0	0	0	0	0	1	1	0	0	0	0
4	Advocate General	0	0	1	0	0	0	0	0	0	0	0	0	0	1	1	1
5	Prosecution & Litigation	0	4	1	0	1	1	0	0	1	3	2	1	0	2	5	7
6	Justice	0	10	31	47	1	2	5	8	2	6	17	20	2	3	11	36
7	Election	0	0	1	0	0	1	0	0	0	3	0	1	0	7	5	2
8	Language	0	0	2	1	0	1	0	0	2	4	5	11	0	1	13	8
9	Financial Commissioner	0	0	1	0	0	0	0	0	5	2	0	2	0	0	0	1
10	Revenue	1	11	83	20	0	1	53	6	1	14	106	35	2	40	299	168
11	Excise & Taxation	3	9	5	0	0	1	3	0	2	13	17	9	2	17	60	31
12	Punjab Public Service Commission	0	0	1	0	0	0	0	0	0	2	0	1	0	1	2	5
13	Civil Secretariate	0	19	5	0	0	2	0	0	3	8	13	3	0	0	14	3
14	Police	4	46	1375	47	1	12	265	26	0	24	96	8	2	34	741	27
15	Home Guard	0	0	38	12	0	0	2	2	0	0	23	3	0	0	32	21
16	Jails	1	0	34	2	0	1	1	0	0	3	15	4	0	5	29	11
17	Treasury & Accounts	0	0	0	0	0	1	2	0	2	3	10	0	0	9	36	13
18	Local Fund Examiner	0	0	0	0	0	0	0	0	0	0	0	0	2	0	0	1
19	Controller Internal Audit	0	0	0	0	0	0	0	0	0	0	0	0	0	0	0	2
20	Institutional Finance & Banking	0	0	0	1	0	0	0	0	0	1	0	3	0	2	3	1
21	Printing & Stationary	0	0	1	0	0	0	4	0	0	1	5	3	0	3	30	21
22	Local Government	0	0	0	0	0	1	0	0	0	1	0	0	0	3	4	4
23	Subordinate Services Board	0	1	0	0	0	0	0	0	0	0	0	0	0	1	0	0
	Total	9	100	1581	134	3	24	336	42	18	88	310	105	10	129	1285	363

Table No - 7.1																	
Sr.No	Department Name	Ex Servieman				Wards of Freedom Fighters				Handicapped Employees				Compasionate Ground			
		Group A	Group B	Group C	Group D	Group A	Group B	Group C	Group D	Group A	Group B	Group C	Group D	Group A	Group B	Group C	Group D
24	General Education	322	492	454	217	143	258	258	107	143	370	663	188	253	88	761	396
25	Technical Education & Industrial Training	5	32	19	7	4	14	0	4	7	20	18	19	12	43	60	92
26	Sports	1	0	2	0	0	0	0	0	0	1	1	3	0	7	4	4
27	Youth Services	4	2	8	2	0	0	0	0	0	0	2	2	0	0	0	0
28	Cultural Affaires Museum Archaeology & Archives	0	0	0	1	0	0	0	1	0	0	2	0	0	1	1	0
29	Health & Family Welfare	48	25	87	57	53	11	125	68	55	52	169	131	56	46	221	264
30	Water Supply Public Health	2	6	23	41	0	5	6	20	3	13	31	29	5	21	101	164
31	Town & Country Planning	0	0	0	1	0	0	0	0	1	2	6	2	3	2	7	6
32	Chief Architect	0	0	0	0	0	0	0	0	3	1	3	4	0	3	4	3
33	Information & Publicity	0	1	1	0	0	0	1	0	3	1	3	6	0	3	9	10
34	Social Welfare & Welfare of SCs & BCs	5	7	9	15	3	6	4	2	0	14	28	10	0	16	29	36
35	Labour	2	1	0	0	0	0	2	0	0	1	8	1	0	0	7	8
36	Employment	0	0	0	0	0	1	0	0	0	5	2	2	1	6	12	12
37	Subordinate Services Selection Board	0	0	0	0	0	0	0	0	0	0	0	0	0	0	0	0
38	Sainik Welfare	20	26	89	20	0	0	1	0	0	1	1	2	0	4	5	3
39	Hospitality	0	0	0	0	0	0	0	0	0	0	0	4	0	0	0	0
40	Rehabilitation	0	0	0	0	0	0	0	0	0	0	0	0	0	0	0	0
41	Administrative General Official Trustee & Charitab	0	0	0	0	0	0	0	0	0	0	0	0	0	0	0	0
42	Information Technology	0	0	0	1	0	0	1	0	0	0	2	0	0	0	0	3
43	Agriculture	5	3	9	9	0	1	8	5	10	7	24	26	1	12	29	63
	Total	414	595	701	371	203	296	406	207	225	488	963	429	331	252	1250	1064

Table No - 7.1																	
Sr.No	Department Name	Ex Servieman				Wards of Freedom Fighters				Handicapped Employees				Compasionate Ground			
		Group A	Group B	Group C	Group D	Group A	Group B	Group C	Group D	Group A	Group B	Group C	Group D	Group A	Group B	Group C	Group D
44	Horticulture	1	0	2	4	0	0	1	0	1	1	6	11	2	1	7	44
45	Soil Conservation	2	0	5	4	0	0	0	0	3	1	3	3	0	19	34	38
46	Animal Husbandary	4	10	23	10	0	0	1	2	4	4	17	18	1	2	31	47
47	Dairy Development	0	0	1	0	0	0	0	0	0	2	2	2	0	1	6	8
48	Fisheries	0	0	2	0	0	0	0	1	0	2	2	2	0	5	6	21
49	Forest	0	10	43	36	0	2	6	3	0	4	5	4	0	15	16	12
50	Cooperation	1	19	2	5	0	4	1	1	1	14	9	9	3	42	34	50
51	Rural Dev. & Panchayats	1	3	20	9	0	8	11	0	1	12	28	4	1	13	67	14
52	Consolidation	0	0	0	0	0	0	0	0	0	0	0	0	0	0	0	0
53	Colonization	0	0	1	0	0	0	0	0	0	0	3	0	0	0	0	0
54	Irrigation	8	9	35	18	4	2	28	6	8	39	70	69	7	19	89	182
55	Chief Electrical Inspector	0	0	0	0	0	0	0	0	0	0	1	0	0	1	1	7
56	Industries	0	2	3	0	1	1	0	0	2	7	9	0	1	8	25	18
57	Transport	0	1	5	2	0	3	2	2	0	2	60	6	2	18	148	28
58	Civil Aviation	0	0	0	0	0	0	0	0	0	0	0	0	0	0	1	0
59	Public Works Deptt. B&R	4	6	18	29	2	4	9	27	4	20	29	51	5	21	86	183
60	Tourism	0	0	0	0	0	0	0	0	0	1	0	2	0	0	2	0
61	ESO Punjab	0	1	2	0	0	0	2	0	1	7	3	1	0	9	17	5
62	Food Civil Supplies & Consumer Affairs	0	15	4	0	0	15	2	2	1	18	8	4	2	50	22	33
63	Punjab State Planning Board	0	0	0	0	0	0	0	0	0	0	1	0	0	0	0	2
64	Lotteries & Small Savings	0	0	0	0	0	0	0	0	0	0	1	0	0	0	0	0
65	Lok Pal	0	0	0	0	0	0	0	0	0	0	0	0	0	0	0	0
66	Pensioners & Welfare of Pensioners	1	1	2	1	0	0	0	0	0	1	0	0	0	0	0	0
67	Finance	0	0	0	0	0	0	0	0	0	0	0	0	0	0	0	0
	Total	22	77	168	118	7	39	63	44	26	135	257	186	24	224	592	692
	Grand Total	445	772	2450	623	213	359	805	293	269	711	1530	720	365	605	3127	2119

Table 08

Distribution of SCs, BCs, Ex-Servicemen, Wards of Freedom Fighters, Handicapped, Terrorist affected and Compassionate ground employees out of total posts filled in Pb. Govt. services as on 31st March: 2019

Sr.No	Parameter Name	Group A	Group A (%) With Total Filled Posts	Group B	Group B (%) With Total Filled Posts	Group C	Group C (%) With Total Filled Posts	Group D	Group D (%) With Total Filled Posts	Total
1	Total Sanctioned Posts	42652	11.49	78168	21.06	188921	50.90	61439	16.55	371180
2	Filled Post	30928	11.17	56330	20.34	148565	53.65	41105	14.84	276928
3	General Castes	20855	67.43	34353	60.99	83029	55.89	15660	38.10	153897
4	Scheduled Castes	6018	19.46	13237	23.50	39059	26.29	16178	39.36	74492
5	BackWard Classes	2847	9.21	6440	11.43	18681	12.57	5690	13.84	33658
6	Ex-Serviceman	445	1.44	772	1.37	2450	1.65	623	1.52	4290
7	Wards of Freedom Fighters	213	0.69	359	0.64	805	0.54	293	0.71	1670
8	Handicapped	269	0.87	711	1.26	1530	1.03	720	1.75	3230
9	Compasionate Ground	365	1.18	605	1.07	3127	2.10	2119	5.16	6216

Table 09

District-wise No. of Punjab Government Employees-Appointed, Retired, and Likely to Retired to Next Year as on 31st March: 2019

Sr.No	District Name	Appointed During Current Financial Year	Retired During Current Financial Year	Pensioners as on Current Financial Year	Likely Retire to During Next Year
1	Amritsar	80	260	359	326
2	Bathinda	190	453	453	373
3	Faridkot	250	244	232	229
4	Fatehgarh Sahib	90	151	137	84
5	Firozpur	275	281	253	273
6	Gurdaspur	83	319	192	78
7	Hoshiarpur	13	25	22	9
8	Jalandhar	115	288	288	143
9	Kapurthala	97	176	163	114
10	Ludhiana	423	424	420	316
11	Mansa	0	0	0	0
12	Moga	400	389	144	185
13	Sri Muktsar Sahib	37	33	121	22
14	SBS Nagar	71	65	64	52
15	Patiala	285	260	250	338
16	Rupnagar	118	146	83	165
17	Sangrur	526	457	379	456
18	SAS Nagar (Mohali)	184	216	242	331
19	Barnala	95	81	175	165
20	Tarn Taran	56	58	57	34
21	Fazilka	435	126	128	90
22	Pathankot	6	64	2	103
23	Chandigarh	339	472	350	443
	Total	4168	4988	4514	4329

BOX-6: Department-wise distribution of Government Employees.

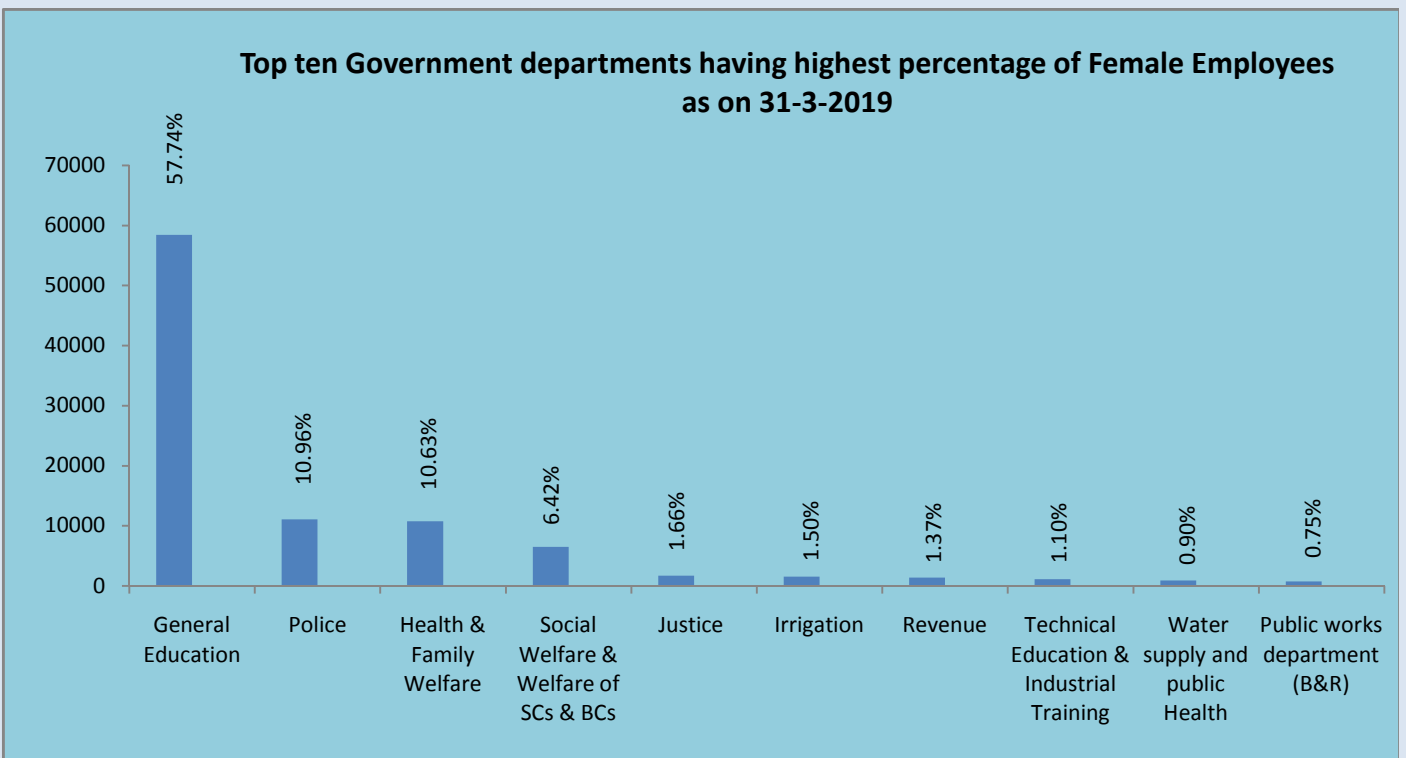
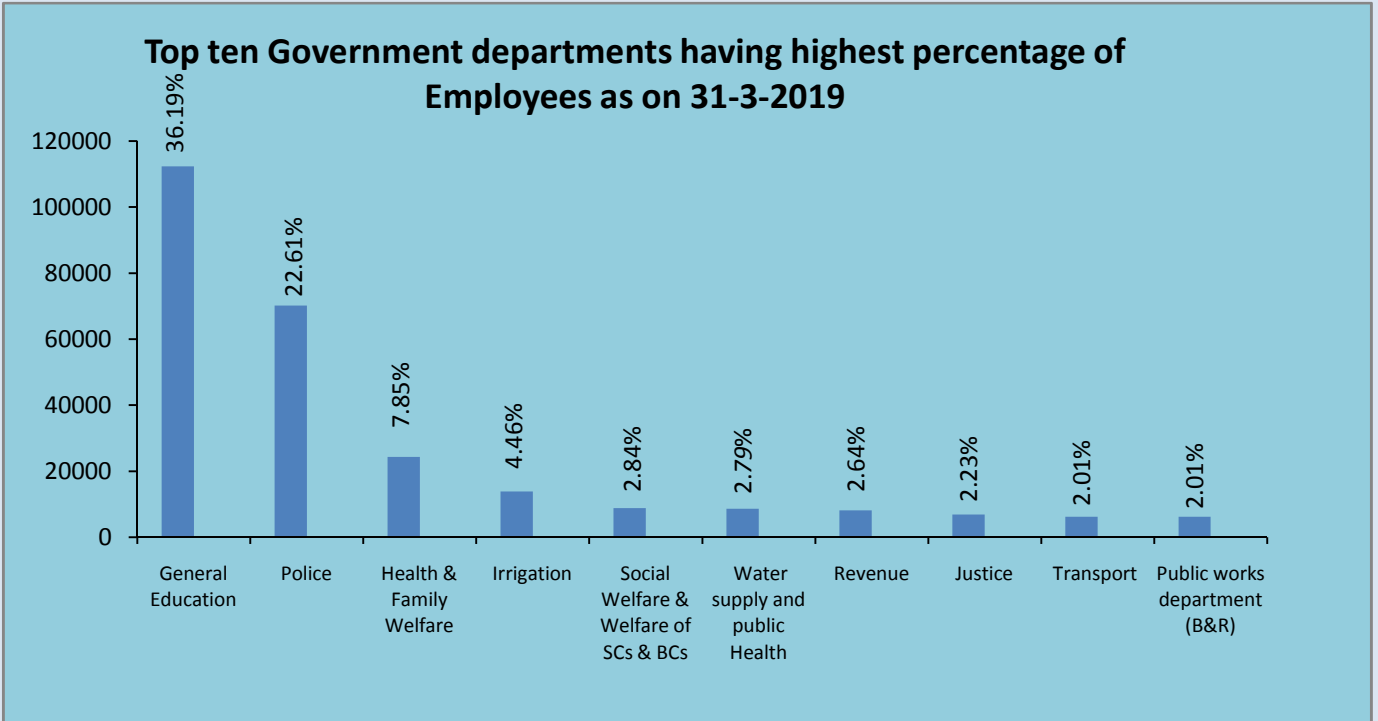


Table 10

Department-wise No. of Punjab Govt. employees-Employed, Retired and availed/likely to be availed Pension during the year as on 31st March: 2019

Sr.No	Department Name	Appointed During Current Financial Year	Retired During Current Financial Year	Pensioners as on Current Financial Year	Likely Retire to During Next Year
1	Pb Vidhan Sabha	0	4	4	5
2	Pb. Raj Bhawan	8	1	1	3
3	Legal Remembrancer	0	2	2	2
4	Advocate General	63	4	8	4
5	Prosecution & Litigation	3	9	7	8
6	Justice	585	162	122	62
7	Election	12	14	11	14
8	Language	3	8	4	6
9	Financial Commissioner	0	26	26	21
10	Revenue	227	205	177	220
11	Excise & Taxation	8	35	36	38
12	Punjab Public Service Commission	0	3	3	8
13	Civil Secretariate	53	164	75	104
14	Police	281	664	596	551
15	Home Guard	75	30	15	33
16	Jails	96	72	75	51
17	Treasury & Accounts	7	15	10	15
18	Local Fund Examiner	6	17	17	42
19	Controller Internal Audit	0	7	6	7
20	Institutional Finance & Banking	0	2	2	1
21	Printing & Stationary	14	20	16	7
22	Local Government	0	9	9	12
23	Subordinate Services Board	0	0	0	0
24	General Education	1165	1640	1475	1257
25	Technical Education & Industrial Training	78	64	80	51
26	Sports	3	17	12	6
27	Youth Services	0	7	1	3
28	Cultural Affaires Museum Archaeology & Archives	0	5	5	2
29	Health & Family Welfare	487	383	434	459
30	Water Supply Public Health	201	239	208	217
31	Town & Country Planning	0	13	13	19
32	Chief Architect	0	1	1	8
33	Information & Publicity	22	27	18	17
34	Social Welfare & Welfare of SCs & BCs	73	55	47	50
35	Labour	3	14	20	7
36	Employment	15	12	12	8
37	Subordinate Services Selection Board	0	0	0	0
38	Sainik Welfare	6	20	8	10
39	Hospitality	0	18	24	6
40	Rehabilitation	0	0	0	0

Sr.No	Department Name	Appointed During Current Financial Year	Retired During Current Financial Year	Pensioners as on Current Financial Year	Likely Retire to During Next Year
41	Administrative General Official Trustee & Charitab	0	0	0	0
42	Information Technology	1	4	3	1
43	Agriculture	56	62	66	76
44	Horticulture	1	19	16	23
45	Soil Conservation	57	22	23	23
46	Animal Husbandary	73	125	133	85
47	Dairy Development	0	9	11	10
48	Fisheries	0	11	10	5
49	Forest	14	47	31	28
50	Cooperation	291	66	57	58
51	Rural Dev. & Panchayats	9	42	42	28
52	Consolidation	0	0	0	0
53	Colonization	0	3	1	3
54	Irrigation	123	284	258	384
55	Chief Electrical Inspector	0	3	3	6
56	Industries	3	17	15	27
57	Transport	14	145	145	99
58	Civil Aviation	0	6	6	6
59	Public Works Deptt. B&R	27	89	80	87
60	Tourism	2	0	0	0
61	ESO Punjab	0	3	3	3
62	Food Civil Supplies & Consumer Affairs	2	33	21	39
63	Punjab State Planning Board	0	4	4	2
64	Lotteries & Small Savings	1	6	6	2
65	Lok Pal	0	0	0	0
66	Pensioners & Welfare of Pensioners	0	0	0	0
67	Finance	0	0	0	0
	Total	4168	4988	4514	4329

BOX-7: Estimated Expenditure on Salaries of Government

Employees according to pay-scales

Top Five Pay-scales in which highest Expenditure (estimated) incurred on salary

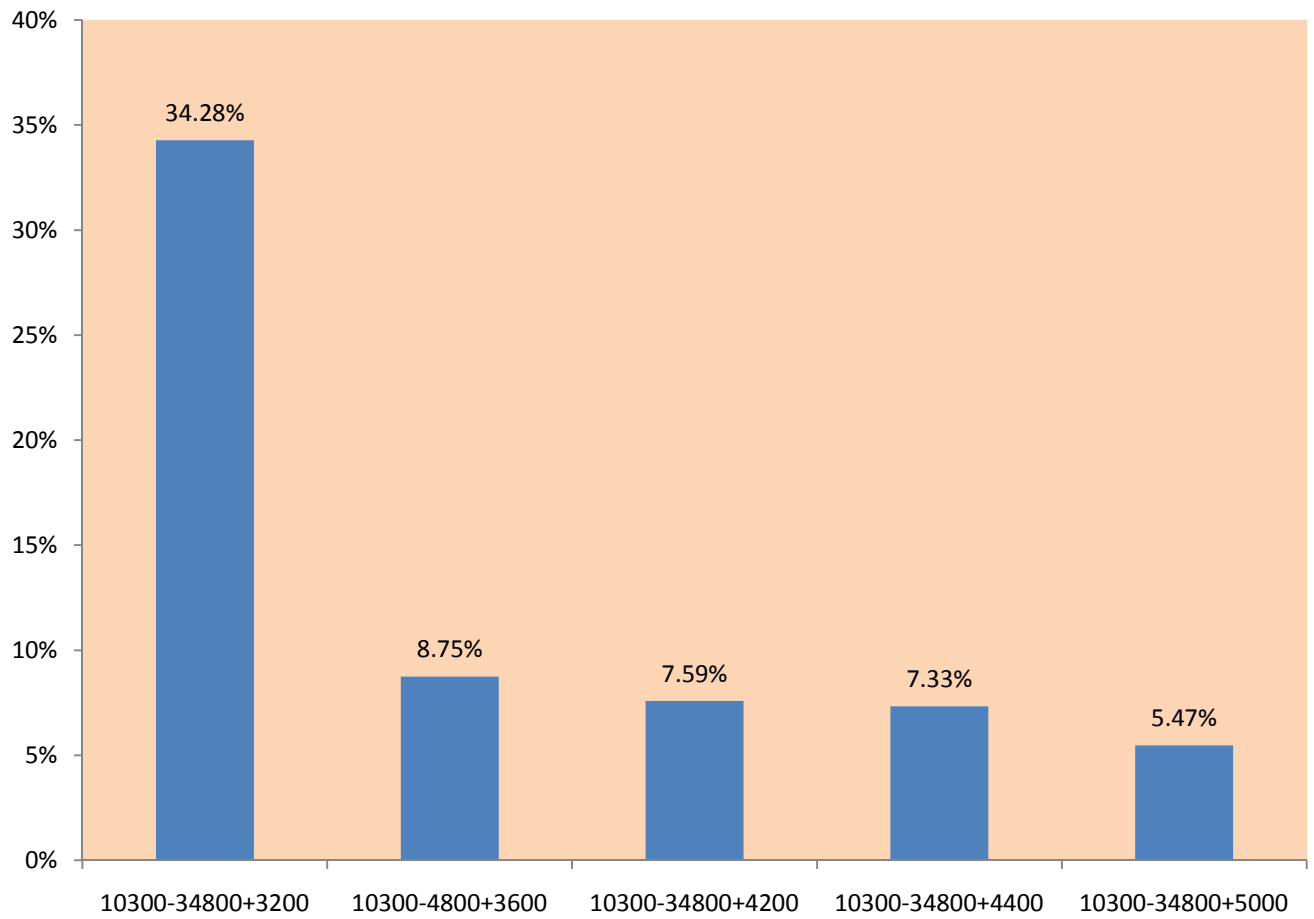


Table 11

Estimated Expenditure on Salries of Punjab Govt. Employee according to PayScale during the year as on 31st March: 2019

Sr.No	Pay Scale Name	Total Employee	Total Basic Pay (Rs.000)	Total Dearness Allowance (Rs.000)	Total Medical Allowance (Rs.000)	Total Monthly Salary (Rs.000)	Total Annual Salary (Rs.000)	Monthly Expenditure Per Employee (Rs.000)	%age to Total	Annually Expenditure Per Employee (Rs.000)
1	2	3	4	5	6	7	8	9	10	11
1	10300-34800+5000	13497	338099	360515	6749	705363	8464356	52	5.47	627
2	10300-34800+5400	4952	125038	133328	2476	260842	3130104	53	2.02	632
3	15600-39100+5400	4474	134443	143357	2237	280037	3360444	63	2.17	751
4	15600-39100+5700	260	7852	8373	130	16355	196260	63	0.13	755
5	15600-39100+6000	608	18452	19675	304	38431	461172	63	0.30	759
6	15600-39100+6600	2393	73345	78208	1197	152750	1833000	64	1.18	766
7	15600-39100+7000	38	1172	1250	19	2441	29292	64	0.02	771
8	15600-39100+7400	279	8662	9236	140	18038	216456	65	0.14	776
9	15600-39100+7600	372	11587	12355	186	24128	289536	65	0.19	778
10	15600-39100+7800	671	20968	22358	336	43662	523944	65	0.34	781
11	15600-39100+8000	42	1316	1403	21	2740	32880	65	0.02	783
12	15600-39100+8200	9	283	302	5	590	7080	66	0.00	787
13	15600-39100+8400	270	8518	9083	135	17736	212832	66	0.14	788
14	37400-67000+8600	1459	82433	87898	730	171061	2052732	117	1.33	1407
15	37400-67000+8700	165	9330	9949	83	19362	232344	117	0.15	1408
16	37400-67000+8800	52	2943	3138	26	6107	73284	117	0.05	1409
17	37400-67000+8900	196	11103	11839	98	23040	276480	118	0.18	1411
18	37400-67000+9000	200	11340	12092	100	23532	282384	118	0.18	1412
19	37400-67000+10000	344	19676	20981	172	40829	489948	119	0.32	1424
20	Any Other	647	24316	25928	324	50568	606816	78	0.39	938
21	10300-34800+3800	2691	65794	70156	1346	137296	1647552	51	1.06	612
22	10300-34800+4200	19027	469015	500111	9514	978640	11743680	51	7.59	617
23	10300-34800+4400	18293	452751	482768	9147	944666	11335992	52	7.33	620
24	10300-34800+4600	5262	130760	139429	2631	272820	3273840	52	2.12	622
25	10300-34800+4800	6608	164869	175800	3304	343973	4127676	52	2.67	625
26	10300-34800+5000	2937	73571	78449	1469	153489	1841868	52	1.19	627
27	Any Other	1512	37471	39955	756	78182	938184	52	0.61	620

Sr.No	Pay Scale Name	Total Employee	Total Basic Pay (Rs.000)	Total Dearness Allowance (Rs.000)	Total Medical Allowance (Rs.000)	Total Monthly Salary (Rs.000)	Total Annual Salary (Rs.000)	Monthly Expenditure Per Employee (Rs.000)	%age to Total	Annually Expenditure Per Employee (Rs.000)
1	2	3	4	5	6	7	8	9	10	11
28	5910-20200+1900	3392	47504	50654	1696	99854	1198248	29	0.77	353
29	5910-20200+1950	847	11883	12671	424	24978	299736	29	0.19	354
30	5910-20200+2000	1278	17962	19153	639	37754	453048	30	0.29	354
31	5910-20200+2400	8291	118188	126024	4146	248358	2980296	30	1.93	359
32	5910-20200+2800	4376	63255	67449	2188	132892	1594704	30	1.03	364
33	5910-20200+3000	1817	26446	28199	909	55554	666648	31	0.43	367
34	10300-34800+3200	87700	2117955	2258375	43850	4420180	53042160	50	34.28	605
35	10300-34800+3600	22209	540789	576643	11105	1128537	13542444	51	8.75	610
36	10300-34800+3800	482	11784	12565	241	24590	295080	51	0.19	612
37	10300-34800+4200	4078	100522	107187	2039	209748	2516976	51	1.63	617
38	10300-34800+4400	549	13587	14488	275	28350	340200	52	0.22	620
39	10300-34800+4600	214	5317	5670	107	11094	133128	52	0.09	622
40	10300-34800+4800	21	523	558	11	1092	13104	52	0.01	624
41	Any Other	13386	259795	277019	6693	543507	6522084	41	4.22	487
42	4900-10680+1300	2053	17327	18476	1027	36830	441960	18	0.29	215
43	4900-10680+1400	2295	19484	20776	1148	41408	496896	18	0.32	217
44	4900-10680+1650	33252	286465	305458	16626	608549	7302588	18	4.72	220
45	Any Other	3600	30654	32686	1800	65140	781680	18	0.51	217
46	1-5000	9033	22582	24079	4517	51178	614136	6	0.40	68
47	5001-10000	10628	79710	84995	5314	170019	2040228	16	1.32	192
48	10000 & Above	13372	66860	71293	6686	144839	1738068	11	1.12	130
49	Any Other	251	1255	1338	126	2719	32628	11	0.02	130
Total		310382	6164954	6573692	155202	12893848	154726176	42	100	499

BOX-8: Distribution of Semi-Government Employees

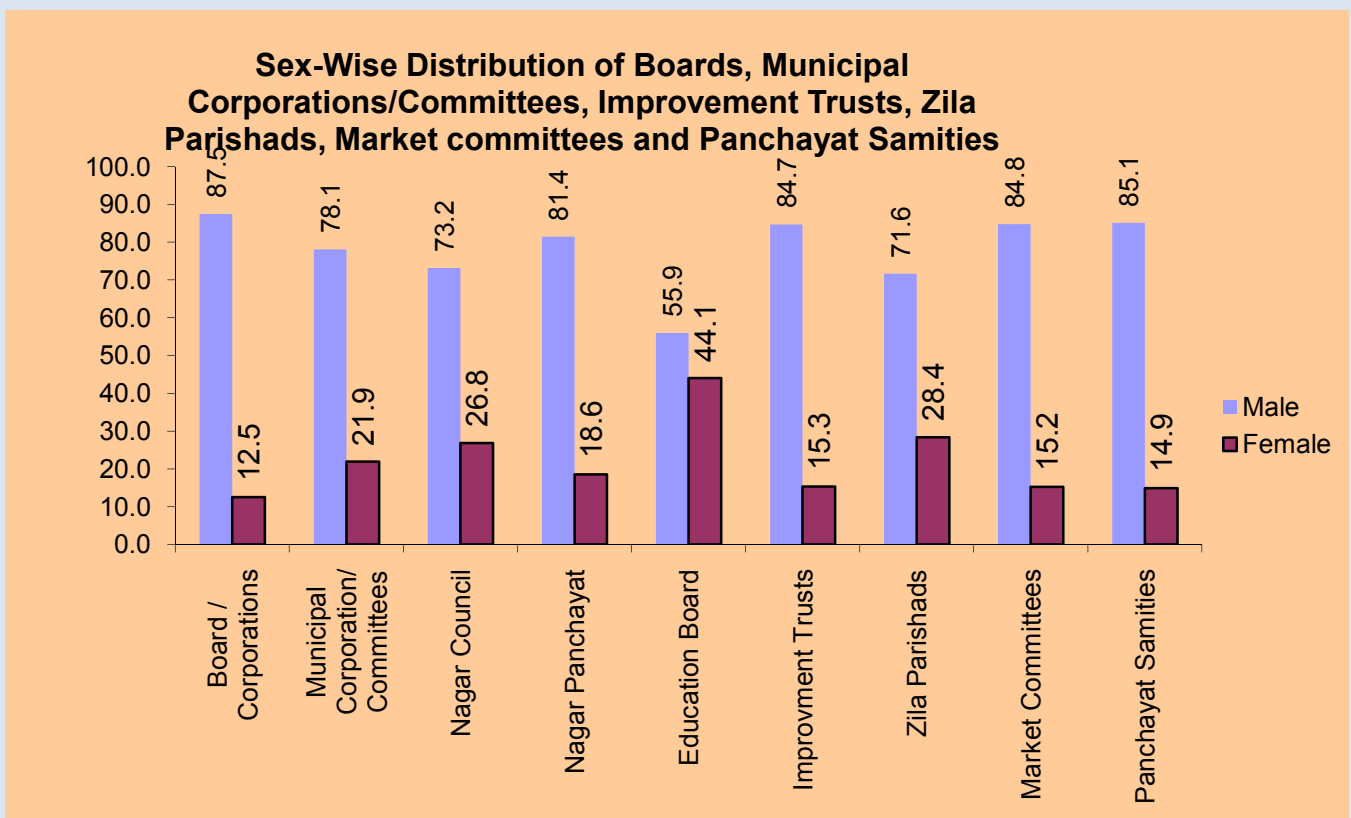
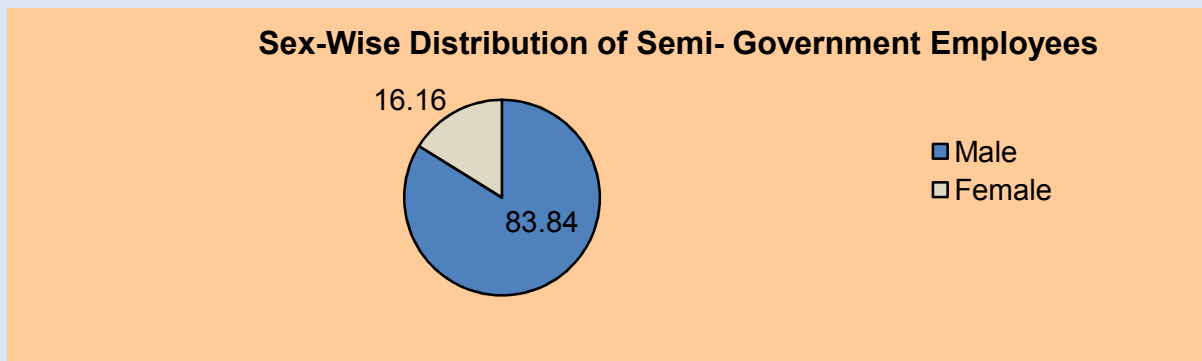
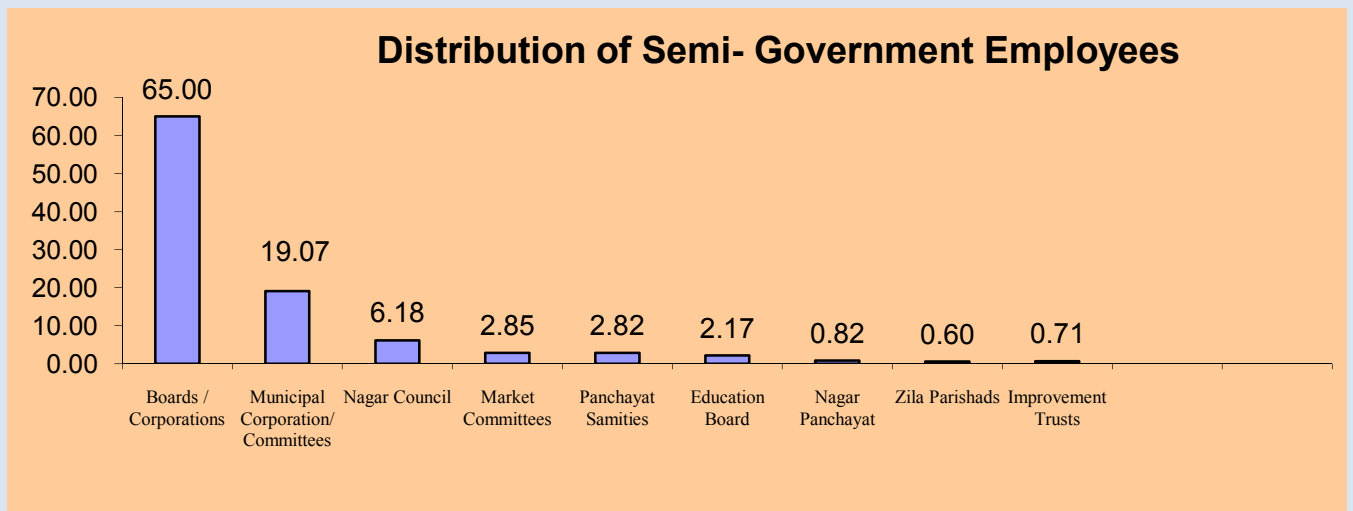


Table 01

Pay Scale-wise No. of Semi-Government Employees working in Boards/Corporations/Municipal Corporations/Municipal Committees/Improvement Trusts/Zila Parishads/Market Committees/Panchyat Samities as on 31st March: 2019

Sr.No	Pay Scale in Rs.	Boards/ Corporations	Municipal Corporations/ Committees	Nagar Council	Nagar Panchayat	Education Board	Improv ment Trusts	Zila Parishads	Market Committees	Panchayat Samities	Total	Grand Total	Percentage to Total
1	4900-10680+1300	733	768	174	6	82	7	3	28	25	1093	1826	2.27
2	4900-10680+1400	476	490	77	0	0	1	5	22	16	611	1087	1.35
3	4900-10680+1650	5635	9023	2748	231	284	216	136	474	240	13352	18987	23.64
4	5910-20200+1900	1167	1487	526	45	66	29	59	199	59	2470	3637	4.53
5	5910-20200+1950	2620	262	54	5	0	26	2	46	22	417	3037	3.78
6	5910-20200+2000	631	2	5	0	0	3	1	10	1	22	653	0.81
7	5910-20200+2400	1348	347	149	12	94	39	10	30	5	686	2034	2.53
8	5910-20200+2800	152	79	64	1	0	5	3	7	13	172	324	0.4
9	5910-20200+3000	79	128	34	2	0	31	7	5	52	259	338	0.42
10	10300-34800+3200	12215	1292	400	149	506	56	30	504	1563	4500	16715	20.82
11	10300-34800+3600	9822	493	224	60	0	29	21	153	43	1023	10845	13.51
12	10300-34800+3800	3032	46	16	1	0	10	4	419	1	497	3529	4.39
13	10300-34800+4200	1095	123	74	10	0	3	5	211	88	514	1609	2
14	10300-34800+4400	3823	393	120	44	196	29	14	105	13	914	4737	5.9
15	10300-34800+4600	683	34	20	10	0	3	2	19	9	97	780	0.97
16	10300-34800+4800	530	159	86	42	0	25	16	27	91	446	976	1.22
17	10300-34800+5000	3606	27	5	10	0	1	3	24	10	80	3686	4.59
18	10300-34800+5400	712	22	15	2	0	8	24	3	4	78	790	0.98
19	15600-39100+5400	1663	52	9	0	488	15	125	1	0	690	2353	2.93
20	15600-39100+5700	264	3	0	0	0	0	2	0	2	7	271	0.34
21	15600-39100+6000	511	10	6	2	0	0	0	0	0	18	529	0.66
22	15600-39100+6600	579	10	13	2	0	12	1	1	0	39	618	0.77
23	15600-39100+7400	291	4	3	0	0	1	3	0	3	14	305	0.38
24	15600-39100+7600	100	26	5	0	0	15	0	1	0	47	147	0.18
25	15600-39100+7800	142	2	0	0	0	0	0	0	1	3	145	0.18
26	15600-39100+8200	33	12	0	0	0	0	1	0	4	17	50	0.06
27	15600-39100+8400	93	2	0	0	0	0	0	0	0	2	95	0.12
28	37400-6700+8600	64	11	1	2	0	1	0	0	1	16	80	0.1
29	37400-6700+8700	36	1	0	0	0	2	0	1	0	4	40	0.05
30	37400-6700+8800	4	7	0	0	0	0	0	0	0	7	11	0.01
31	37400-6700+8900	34	0	0	0	0	0	0	0	0	0	34	0.04
32	37400-6700+10000	25	1	1	0	0	0	0	0	0	2	27	0.03
33	4900-10680+1800	0	0	4	0	0	0	2	0	0	6	6	0.01
Total		52198	15316	4833	636	1716	567	479	2290	2266	28103	80391	100

Table 02**Scheduled Castes, Backward Classes, Ex-Serviceman, Wards of Freedom Fighter, Handicapped, Compassionate Ground Employees Working in Boards/Corporations, Muncipal Corporations/Committees, Improvment Trusts, Market Committees, Zila Parishads, Panchayat Samities as on 31st March: 2019**

Sr.No	Parameter Name	Boards /Corporations	Muncipal Corporations /Committees	Nagar Council	Nagar Panchayat	Education Board	Improvment Trusts	Zila Parishads	Market Committees	Panchayat Samities	Total	Grand Total	%age to Total Filled Post
1	Sanctioned Posts	105126	23871	6280	971	3017	1086	987	3930	3466	43608	148734	54
2	Filled Posts	52198	15316	4833	636	1716	567	479	2290	2266	28103	80301	35
3	Male	45665	11956	3537	518	960	480	343	1941	1928	21663	67328	27
4	Female	6533	3360	1296	118	756	87	136	349	338	6440	12973	8
5	General Category	30862	4399	1168	273	954	301	221	1135	1311	9762	40624	12
6	Scheduled Castes	11957	9579	2878	279	746	151	152	616	442	14843	26800	18
7	Backward Castes	6069	978	235	46	16	86	53	207	249	1870	7939	2
8	Ex-Servicemen	237	42	13	1	0	3	17	26	22	124	361	0
9	Wards of Freedom Fighters	27	76	2	1	0	2	7	15	11	114	141	0
10	Handicapped	473	137	105	14	0	9	13	35	101	414	887	1
11	Compassionate Ground	2573	105	432	22	0	15	16	256	130	976	3549	1
12	Appointed During Current Year	292	62	12	14	0	3	0	9	86	186	478	0
13	Retired During Current Year	3218	382	101	17	9	17	11	82	21	640	3858	1
14	Likely to Retired During Next Year	4	46	49	1	6	4	2	78	4	190	194	0
15	Pensioners During Retired Current Year	2893	375	386	80	9	109	9	533	17	1518	4411	2

BOX-9: Reservation Position in Semi-Government Employees

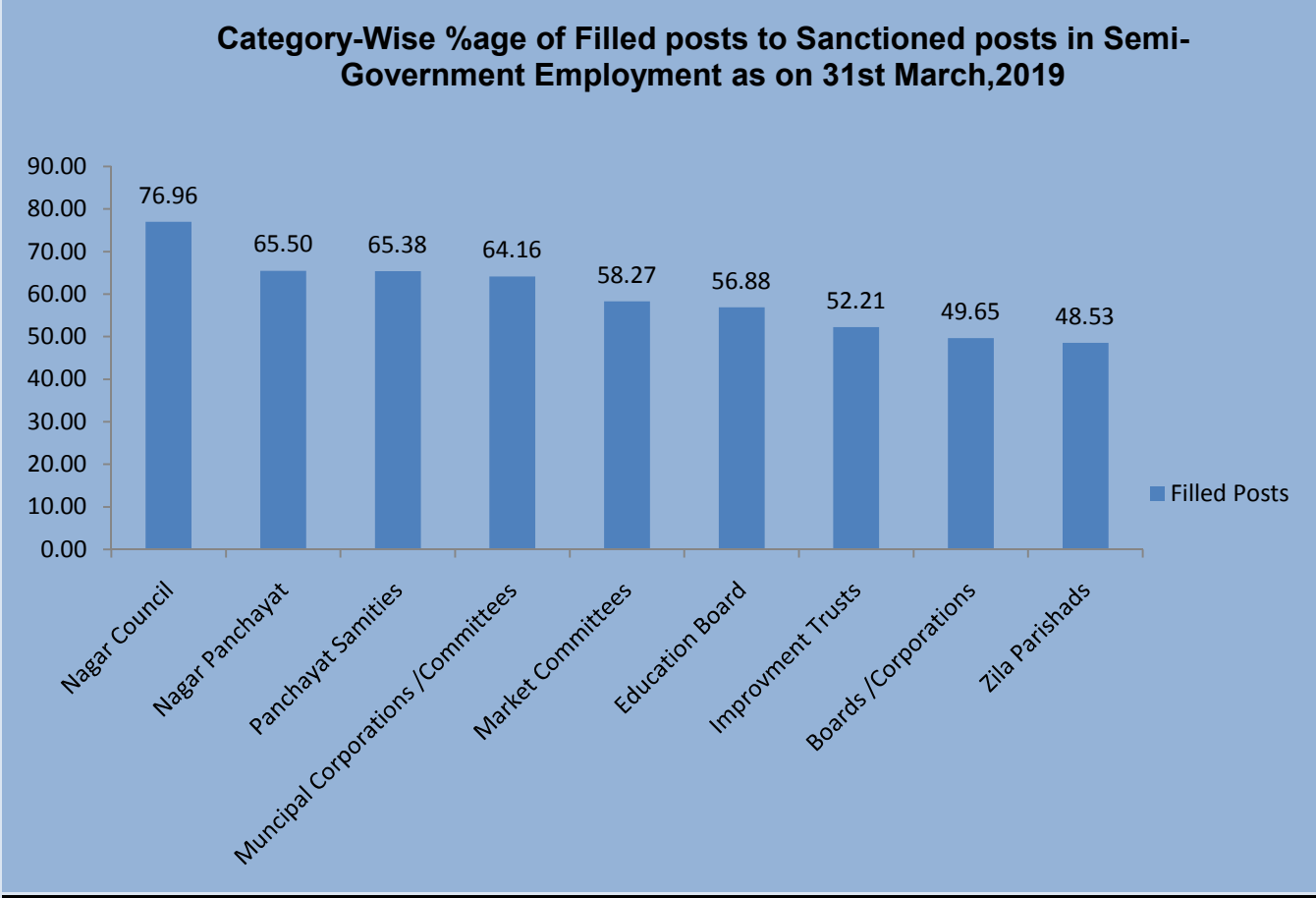
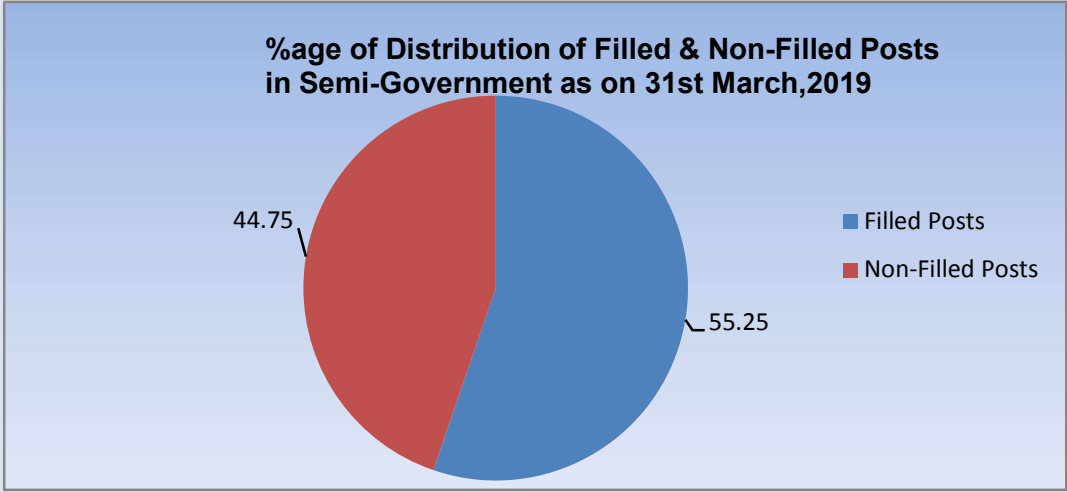


Table 03

District-wise No. of Semi-Government Employees working in Municipal Corporations/Committees as on 31st March: 2019

Sr.No	District Name	Sanctioned Posts	Filled Posts			General Category	Scheduled Castes	Backward Classes	Ex-Servicemen	Wards of Freedom Fighters	Handicapped	Compassionate Ground	Appointed During Current Year	Retired During Current Year	Likely Retired During Next Year	Pensioners Current Year
			Male	Female	Total											
1	Amritsar	5248	3285	911	4196	1578	2167	394	20	10	13	14	0	0	0	0
2	Bathinda	1330	569	262	831	248	423	114	0	0	46	0	6	13	0	13
3	Faridkot	0	0	0	0	0	0	0	0	0	0	0	0	0	0	0
4	Fatehgarh Sahib	0	0	0	0	0	0	0	0	0	0	0	0	0	0	0
5	Firozpur	0	0	0	0	0	0	0	0	0	0	0	0	0	0	0
6	Gurdaspur	625	451	113	564	125	367	58	0	0	14	0	0	15	8	13
7	Hoshiarpur	623	332	10	342	177	100	20	10	10	10	15	0	0	0	0
8	Jalandhar	0	0	0	0	0	0	0	0	0	0	0	0	0	0	0
9	Kapurthala	1483	392	146	538	92	355	57	10	9	15	0	6	19	0	74
10	Ludhiana	9117	4566	1091	5657	1173	4272	178	0	32	0	2	32	217	0	217
11	Mansa	191	120	40	160	20	74	3	0	14	5	44	0	4	0	25
12	Moga	1023	347	172	519	79	414	10	0	0	7	9	0	9	0	9
13	Sri Muktsar Sahib	0	0	0	0	0	0	0	0	0	0	0	0	0	0	0
14	SBS Nagar	0	0	0	0	0	0	0	0	0	0	0	0	0	0	0
15	Patiala	1530	816	262	1078	305	709	32	0	0	12	20	2	16	12	16
16	Rupnagar	512	211	79	290	138	119	27	0	1	4	1	0	73	11	0
17	Sangrur	0	0	0	0	0	0	0	0	0	0	0	0	0	0	0
18	SAS Nagar (Mohali)	1128	266	64	330	125	181	14	2	0	8	0	0	0	0	0
19	Barnala	0	0	0	0	0	0	0	0	0	0	0	0	0	0	0
20	Tarn Taran	170	117	39	156	87	55	12	0	0	2	0	0	0	0	0
21	Fazilka	368	231	70	301	64	215	21	0	0	1	0	16	9	15	8
22	Pathankot	523	253	101	354	188	128	38	0	0	0	0	0	7	0	0
23	Chandigarh	0	0	0	0	0	0	0	0	0	0	0	0	0	0	0
Total		23871	11956	3360	15316	4399	9579	978	42	76	137	105	62	382	46	375

Table 04

District-wise No. of Semi-Government Employees working in Improve Trusts as on 31st March: 2019

Sr. No	District Name	Sanctioned Posts	Filled Posts			General Category	Scheduled Castes	Backward Classes	Ex-Servicemen	Wards of Freedom Fighters	Handicapped	Compassionate Ground	Appointed During Current Year	Retired During Current Year	Likely Retired During Next Year	Pensioners Current Year
			Male	Female	Total											
1	Amritsar	190	108	30	138	90	28	16	1	1	2	0	0	0	0	0
2	Bathinda	52	17	6	23	14	3	2	0	0	0	4	0	1	0	1
3	Faridkot	17	10	0	10	5	4	1	0	0	0	0	0	0	3	1
4	Fatehgarh Sahib	0	0	0	0	0	0	0	0	0	0	0	0	0	0	0
5	Firozpur	0	0	0	0	0	0	0	0	0	0	0	0	0	0	0
6	Gurdaspur	63	33	4	37	21	8	6	0	0	2	0	1	3	0	3
7	Hoshiarpur	22	11	1	12	4	4	1	1	0	1	1	0	0	0	0
8	Jalandhar	156	55	4	59	14	27	18	0	0	0	0	0	2	0	80
9	Kapurthala	55	14	5	19	10	4	5	0	0	0	0	0	0	0	11
10	Ludhiana	308	118	18	136	74	38	21	0	0	3	0	2	7	0	7
11	Mansa	0	0	0	0	0	0	0	0	0	0	0	0	0	0	0
12	Moga	21	11	2	13	5	6	1	0	0	1	0	0	0	0	0
13	Sri Muktsar Sahib	0	0	0	0	0	0	0	0	0	0	0	0	0	0	0
14	SBS Nagar	0	0	0	0	0	0	0	0	0	0	0	0	0	0	0
15	Patiala	89	49	11	60	32	14	6	0	1	0	7	0	0	1	0
16	Rupnagar	30	8	2	10	6	2	2	0	0	0	0	0	1	0	0
17	Sangrur	27	14	1	15	8	3	1	1	0	0	2	0	1	0	0
18	SAS Nagar (Mohali)	0	0	0	0	0	0	0	0	0	0	0	0	0	0	0
19	Barnala	23	14	1	15	7	5	2	0	0	0	1	0	1	0	5
20	Tarn Taran	4	2	1	3	1	1	1	0	0	0	0	0	0	0	0
21	Fazilka	14	3	1	4	2	1	1	0	0	0	0	0	0	0	0
22	Pathankot	15	13	0	13	8	3	2	0	0	0	0	0	1	0	1
23	Chandigarh	0	0	0	0	0	0	0	0	0	0	0	0	0	0	0
Total		1086	480	87	567	301	151	86	3	2	9	15	3	17	4	109

Table 05
District-wise No. of Semi-Government Employees working in Zila Parishads as on 31st March: 2019

Sr.No	District Name	Sanctioned Posts	Filled Posts			General Category	Scheduled Castes	Backward Classes	Ex-Servicemen	Wards of Freedom Fighters	Handicapped	Compassionate Ground	Appointed During Current Year	Retired During Current Year	Likely Retired During Next Year	Pensioners Current Year
			Male	Female	Total											
1	Amritsar	103	30	27	57	20	15	10	9	0	3	0	0	0	0	0
2	Bathinda	21	10	2	12	3	6	2	0	1	0	0	0	2	0	2
3	Faridkot	17	8	2	10	8	1	0	0	0	1	0	0	0	0	0
4	Fatehgarh Sahib	44	21	9	30	19	10	0	1	0	0	0	0	0	0	0
5	Firozpur	61	24	6	30	12	12	3	0	3	0	0	0	1	0	1
6	Gurdaspur	96	43	4	47	23	10	14	0	0	0	0	0	0	0	0
7	Hoshiarpur	22	7	1	8	3	3	0	0	0	1	1	0	0	0	0
8	Jalandhar	74	21	3	24	3	18	1	2	0	0	0	0	1	0	0
9	Kapurthala	16	4	2	6	2	1	2	0	0	1	0	0	0	0	0
10	Ludhiana	0	0	0	0	0	0	0	0	0	0	0	0	0	0	0
11	Mansa	51	11	5	16	12	3	1	0	0	0	0	0	0	0	0
12	Moga	101	22	9	31	19	5	3	0	3	1	0	0	3	0	3
13	Sri Muktsar Sahib	69	28	8	36	17	13	2	4	0	0	0	0	1	0	1
14	SBS Nagar	23	7	0	7	0	7	0	0	0	0	0	0	0	0	0
15	Patiala	19	11	6	17	8	2	0	0	0	0	7	0	0	1	0
16	Rupnagar	67	25	4	29	16	7	4	0	0	2	0	0	0	0	0
17	Sangrur	23	9	3	12	2	3	1	0	0	0	6	0	1	0	1
18	SAS Nagar (Mohali)	65	24	29	53	30	14	3	1	0	3	2	0	1	0	1
19	Barnala	13	4	0	4	3	0	0	0	0	1	0	0	0	0	0
20	Tarn Taran	63	14	5	19	4	15	0	0	0	0	0	0	0	0	0
21	Fazilka	8	5	3	8	3	2	3	0	0	0	0	0	1	0	0
22	Pathankot	31	15	8	23	14	5	4	0	0	0	0	0	0	1	0
23	Chandigarh	0	0	0	0	0	0	0	0	0	0	0	0	0	0	0
Total		987	343	136	479	221	152	53	17	7	13	16	0	11	2	9

Table 06

District-wise No. of Semi-Government Employees Working in Market Committees as on 31st March: 2019

Sr.No	District Name	Sanctioned Posts	Filled Posts			General Category	Scheduled Castes	Backward Classes	Ex-Servicemen	Wards of Freedom Fighters	Handicapped	Compassionate Ground	Appointed During Current Year	Retired During Current Year	Likely Retired During Next Year	Pensioners Current Year
			Male	Female	Total											
1	Amritsar	239	141	56	197	97	60	16	6	2	10	6	0	0	0	0
2	Bathinda	259	115	16	131	70	45	9	3	0	2	2	3	7	0	7
3	Faridkot	139	67	13	80	28	17	9	3	0	3	20	0	0	50	71
4	Fatehgarh Sahib	119	65	6	71	53	14	4	0	0	0	0	0	5	0	84
5	Firozepur	233	113	20	133	70	29	12	0	7	0	15	1	7	0	6
6	Gurdaspur	253	127	25	152	97	38	16	0	0	1	0	1	6	1	3
7	Hoshiarpur	126	57	7	64	27	29	2	1	0	3	2	0	0	0	0
8	Jalandhar	226	84	14	98	47	37	11	2	1	0	0	0	12	0	103
9	Kapurthala	138	61	7	68	24	32	7	0	0	0	5	2	0	0	65
10	Ludhiana	387	188	34	222	79	56	19	6	4	4	54	0	6	0	0
11	Mansa	132	71	13	84	52	23	8	0	0	0	1	0	4	0	66
12	Moga	236	126	12	138	82	34	2	1	1	2	16	1	2	0	2
13	Sri Muktsar Sahib	0	0	0	0	0	0	0	0	0	0	0	0	0	0	0
14	SBS Nagar	73	32	6	38	22	10	6	0	0	0	0	0	1	0	14
15	Patiala	281	176	28	204	84	50	20	0	0	3	47	0	13	8	13
16	Rupnagar	85	43	5	48	31	9	4	2	0	0	2	0	2	4	0
17	Sangrur	336	171	18	189	81	41	23	0	0	0	44	0	2	0	2
18	SAS Nagar (Mohali)	96	39	9	48	22	8	4	0	0	1	13	0	0	0	0
19	Barnala	107	58	10	68	38	15	7	1	0	2	5	0	5	0	91
20	Tarn Taran	193	90	19	109	65	28	11	0	0	0	5	0	6	4	4
21	Fazilka	205	101	18	119	49	33	13	1	0	4	19	1	3	10	1
22	Pathankot	67	16	13	29	17	8	4	0	0	0	0	0	1	1	1
23	Chandigarh	0	0	0	0	0	0	0	0	0	0	0	0	0	0	0
Total		3930	1941	349	2290	1135	616	207	26	15	35	256	9	82	78	533

Table 07

District-wise No. of Semi-Government Employees Working in Panchayat Samities as on 31st March: 2019

Sr.No	District Name	Sanctioned Posts	Filled Posts			General Category	Scheduled Castes	Backward Classes	Ex-Service men	Wards of Freedom Fighters	Handicapped	Compasionate Ground	Appointed During Current Year	Retired During Current Year	Likely Retired During Next Year	Pensioners Current Year
			Male	Female	Total											
1	Amritsar	275	198	47	245	146	38	24	12	5	12	8	0	0	0	0
2	Bathinda	159	111	14	125	89	17	11	0	0	5	3	3	6	0	6
3	Faridkot	47	36	6	42	21	7	4	1	0	0	9	0	0	0	1
4	Fatehgarh Sahib	122	70	9	79	44	17	8	1	0	6	3	0	0	0	0
5	Firozpur	168	120	6	126	78	21	15	0	0	9	3	0	0	0	0
6	Gurdaspur	296	200	30	230	170	27	23	1	0	9	0	0	3	0	0
7	Hoshiarpur	323	109	8	117	41	43	14	1	0	9	9	0	0	0	0
8	Jalandhar	199	78	11	89	36	40	9	0	0	2	2	3	1	0	0
9	Kapurthala	144	76	8	84	35	24	24	0	0	0	1	64	0	0	0
10	Ludhiana	289	104	32	136	55	37	8	4	0	6	26	6	3	1	1
11	Mansa	85	57	9	66	56	5	3	0	0	2	0	0	1	0	0
12	Moga	99	38	18	56	36	10	7	0	1	2	0	1	1	0	1
13	Sri Muktsar Sahib	30	20	8	28	18	8	2	0	0	0	0	0	0	0	0
14	SBS Nagar	139	37	2	39	8	23	7	1	0	0	0	0	1	0	1
15	Patiala	226	178	23	201	130	19	19	1	2	13	17	0	2	2	3
16	Rupnagar	143	63	14	77	41	23	12	0	0	0	1	2	0	0	0
17	Sangrur	205	133	20	153	67	26	11	0	3	12	34	0	1	0	1
18	SAS Nagar (Mohali)	107	60	21	81	50	13	4	0	0	5	9	0	0	0	0
19	Barnala	57	28	9	37	24	6	3	0	0	4	0	0	0	0	0
20	Tarn Taran	200	107	17	124	87	18	10	0	0	4	5	7	2	1	3
21	Fazilka	73	58	9	67	38	9	19	0	0	1	0	0	0	0	0
22	Pathankot	80	47	17	64	41	11	12	0	0	0	0	0	0	0	0
23	Chandigarh	0	0	0	0	0	0	0	0	0	0	0	0	0	0	0
Total		3466	1928	338	2266	1311	442	249	22	11	101	130	86	21	4	17

Table 08

District-wise No. of Semi-Government Employees working in Boards/Corporations as on 31st March: 2019

Sr. No	District Name	Sanctioned Posts	Filled Posts			General Category	Scheduled Castes	Backward Classes	Ex-Servicemen	Wards of Freedom Fighters	Handicapped	Compasionate Ground	Appointed During Current Year	Retired During Current Year	Likely Retired During Next Year	Pensioners Current Year
			Male	Female	Total											
1	Amritsar	4095	3112	953	4065	3224	588	241	1	0	9	2	0	0	0	0
2	Bathinda	0	0	0	0	0	0	0	0	0	0	0	0	0	0	0
3	Faridkot	0	0	0	0	0	0	0	0	0	0	0	0	0	0	0
4	Fatehgarh Sahib	25	7	3	10	3	6	1	0	0	0	0	0	0	0	0
5	Firozpur	0	0	0	0	0	0	0	0	0	0	0	0	0	0	0
6	Gurdaspur	79	44	7	51	37	12	2	0	0	0	0	0	5	0	0
7	Hoshiarpur	0	0	0	0	0	0	0	0	0	0	0	0	0	0	0
8	Jalandhar	1888	587	570	1157	470	642	45	0	0	0	0	0	8	0	8
9	Kapurthala	0	0	0	0	0	0	0	0	0	0	0	0	0	0	0
10	Ludhiana	0	0	0	0	0	0	0	0	0	0	0	0	0	0	0
11	Mansa	0	0	0	0	0	0	0	0	0	0	0	0	0	0	0
12	Moga	12	12	0	12	6	3	3	0	0	0	0	0	0	0	0
13	Sri Muktsar Sahib	0	0	0	0	0	0	0	0	0	0	0	0	0	0	0
14	SBS Nagar	0	0	0	0	0	0	0	0	0	0	0	0	0	0	0
15	Patiala	0	0	0	0	0	0	0	0	0	0	0	0	0	0	0
16	Rupnagar	0	0	0	0	0	0	0	0	0	0	0	0	0	0	0
17	Sangrur	0	0	0	0	0	0	0	0	0	0	0	0	0	0	0
18	SAS Nagar (Mohali)	0	0	0	0	0	0	0	0	0	0	0	0	0	0	0
19	Barnala	0	0	0	0	0	0	0	0	0	0	0	0	0	0	0
20	Tarn Taran	0	0	0	0	0	0	0	0	0	0	0	0	0	0	0
21	Fazilka	0	0	0	0	0	0	0	0	0	0	0	0	0	0	0
22	Pathankot	0	0	0	0	0	0	0	0	0	0	0	0	0	0	0
23	Chandigarh	99027	41903	5000	46903	27122	10706	5777	236	27	464	2571	292	3205	4	2885
Total		105126	45665	6533	52198	30862	11957	6069	237	27	473	2573	292	3218	4	2893

Table 10
District-wise No. of Semi-Government Employees working in Education Board as on 31st March: 2019

Sr.No	District Name	Sanctioned Posts	Filled Posts			General Category	Scheduled Castes	Backward Classes	Ex-Servicemen	Wards of Freedom Fighters	Handicapped	Compassionate Ground	Appointed During Current Year	Retired During Current Year	Likely Retired During Next Year	Pensioners Current Year
			Male	Female	Total											
1	Amritsar	0	0	0	0	0	0	0	0	0	0	0	0	0	0	0
2	Bathinda	0	0	0	0	0	0	0	0	0	0	0	0	0	0	0
3	Faridkot	0	0	0	0	0	0	0	0	0	0	0	0	0	0	0
4	Fatehgarh Sahib	0	0	0	0	0	0	0	0	0	0	0	0	0	0	0
5	Firozpur	0	0	0	0	0	0	0	0	0	0	0	0	0	0	0
6	Gurdaspur	0	0	0	0	0	0	0	0	0	0	0	0	0	0	0
7	Hoshiarpur	0	0	0	0	0	0	0	0	0	0	0	0	0	0	0
8	Jalandhar	3017	960	756	1716	954	746	16	0	0	0	0	0	9	6	9
9	Kapurthala	0	0	0	0	0	0	0	0	0	0	0	0	0	0	0
10	Ludhiana	0	0	0	0	0	0	0	0	0	0	0	0	0	0	0
11	Mansa	0	0	0	0	0	0	0	0	0	0	0	0	0	0	0
12	Moga	0	0	0	0	0	0	0	0	0	0	0	0	0	0	0
13	Sri Muktsar Sahib	0	0	0	0	0	0	0	0	0	0	0	0	0	0	0
14	SBS Nagar	0	0	0	0	0	0	0	0	0	0	0	0	0	0	0
15	Patiala	0	0	0	0	0	0	0	0	0	0	0	0	0	0	0
16	Rupnagar	0	0	0	0	0	0	0	0	0	0	0	0	0	0	0
17	Sangrur	0	0	0	0	0	0	0	0	0	0	0	0	0	0	0
18	SAS Nagar (Mohali)	0	0	0	0	0	0	0	0	0	0	0	0	0	0	0
19	Barnala	0	0	0	0	0	0	0	0	0	0	0	0	0	0	0
20	Tarn Taran	0	0	0	0	0	0	0	0	0	0	0	0	0	0	0
21	Fazilka	0	0	0	0	0	0	0	0	0	0	0	0	0	0	0
22	Pathankot	0	0	0	0	0	0	0	0	0	0	0	0	0	0	0
23	Chandigarh	0	0	0	0	0	0	0	0	0	0	0	0	0	0	0
Total		3017	960	756	1716	954	746	16	0	0	0	0	0	9	6	9

Table 01
PayScale-Wise no of Employee Working in Aided
Institutions as on 31st March: 2019

Sr.No	Pay Scale Name	Parameter Value
1	4900-10680+1300	345
2	4900-10680+1400	245
3	4900-10680+1650	424
4	5910-20200+1900	168
5	5910-20200+1950	113
6	5910-20200+2000	32
7	5910-20200+2400	54
8	5910-20200+2800	94
9	5910-20200+3000	67
10	10300-34800+3200	137
11	10300-34800+3600	118
12	10300-34800+3800	49
13	10300-34800+4200	686
14	10300-34800+4400	161
15	10300-34800+4600	25
16	10300-34800+4800	36
17	10300-34800+5000	990
18	10300-34800+5400	115
19	15600-39100+5400	27
20	15600-39100+5700	3
21	15600-39100+6000	682
22	15600-39100+6600	92
23	15600-39100+7400	138
24	15600-39100+7600	21
25	15600-39100+7800	73
26	15600-39100+8200	72
27	15600-39100+8400	13
28	37400-6700+8600	18
29	37400-6700+8700	1
30	37400-6700+8800	0
31	37400-6700+8900	539
32	37400-6700+10000	121
	Total	5659

Table 02
PayScale-Wise no of Employee Working in Aided Institutions as on 31st March: 2019

Sr. No	District Name	Sanctioned Posts	Filled Posts			General Category	Scheduled Castes	Backward Classes	Ex-Servicemen	Wards of Freedom Fighters	Handicapped	Compassionate Ground	Appointed During Current Year	Retired During Current Year	Likely Retired During Next Year	Pensioners Current Year
			Male	Female	Total											
1	Amritsar	1585	559	380	939	558	196	153	11	0	16	5	0	4	0	6
2	Bathinda	530	79	102	181	172	6	2	0	0	1	0	2	7	0	7
3	Faridkot	137	16	27	43	37	5	1	0	0	0	0	0	0	0	0
4	Fatehgarh Sahib	191	44	38	82	71	7	4	0	0	0	0	0	0	0	0
5	Firozpur	489	121	100	221	208	9	2	0	0	2	0	2	9	4	8
6	Gurdaspur	589	106	94	200	142	24	33	0	0	1	0	0	15	1	10
7	Hoshiarpur	1183	231	445	676	249	237	62	19	17	45	47	0	0	0	0
8	Jalandhar	1524	449	362	811	515	224	69	2	0	1	0	36	66	2	410
9	Kapurthala	468	52	110	162	113	19	29	0	0	1	0	0	8	0	63
10	Ludhiana	766	179	163	342	254	49	26	10	0	2	1	0	18	0	0
11	Mansa	100	18	24	42	34	5	2	0	0	1	0	0	5	0	5
12	Moga	528	108	111	219	169	25	22	0	0	1	2	5	14	0	9
13	Sri Muktsar Sahib	127	50	24	74	58	9	6	0	1	0	0	0	0	0	0
14	SBS Nagar	190	82	47	129	108	14	5	0	1	1	0	8	4	0	0
15	Patiala	1268	360	361	721	616	63	33	1	0	3	5	12	22	17	22
16	Rupnagar	390	86	62	148	82	40	23	0	0	3	0	1	1	0	0
17	Sangrur	531	86	97	183	150	14	17	0	0	1	1	0	8	1	8
18	SAS Nagar (Mohali)	301	51	56	107	86	9	9	0	0	2	1	0	5	0	4
19	Barnala	195	52	53	105	86	16	3	0	0	0	0	11	4	0	1
20	Tarn Taran	134	44	31	75	50	18	6	0	0	1	0	0	0	0	2
21	Fazilka	286	73	64	137	104	15	18	0	0	0	0	9	4	16	1
22	Pathankot	156	29	33	62	41	12	9	0	0	0	0	0	2	0	2
Total		11668	2875	2784	5659	3903	1016	534	43	19	82	62	86	196	41	558

Total Number of Employees & Their Reservation position in Aided institutions of Punjab as on 31st March 2019

